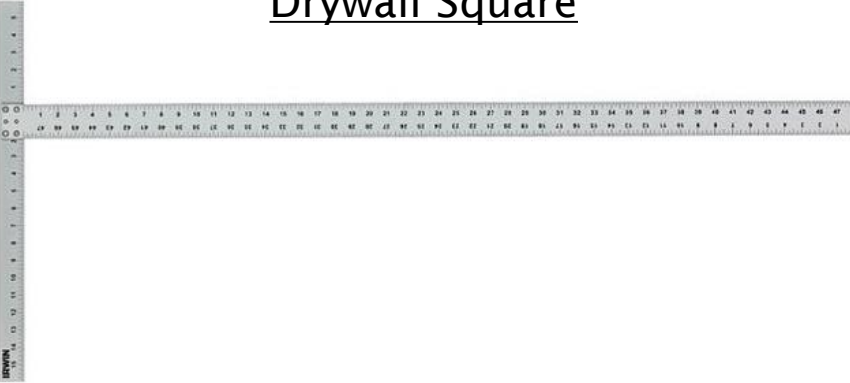


RetractaView™

Assembly & Rescreen Guide

Drywall Square



5'x10' surface



#1 Robertson
Driver Bit



Drill



Scissors



Utility Knife



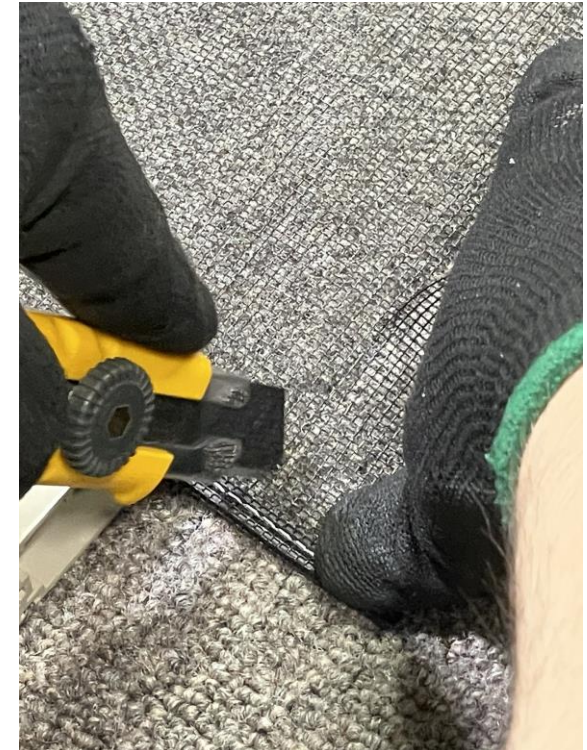
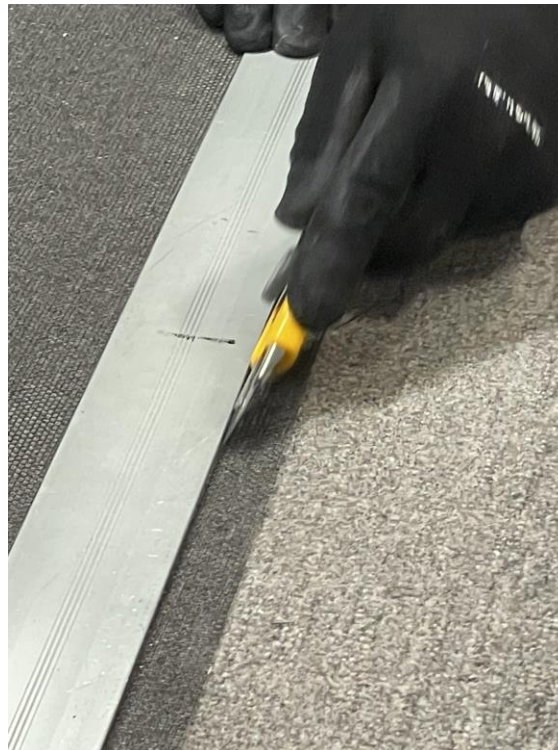
Rubber Mallet



1. Feed pull-bar along spline



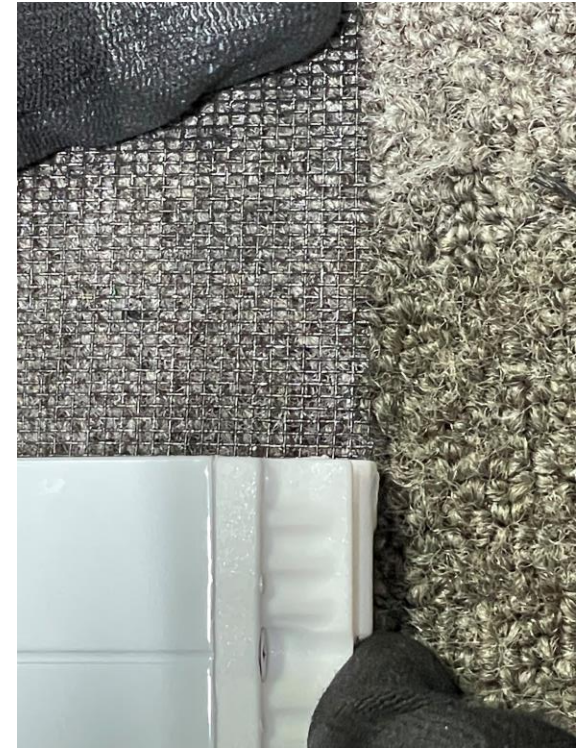
2. Cut either side of mesh square



3. Cut spline at angle

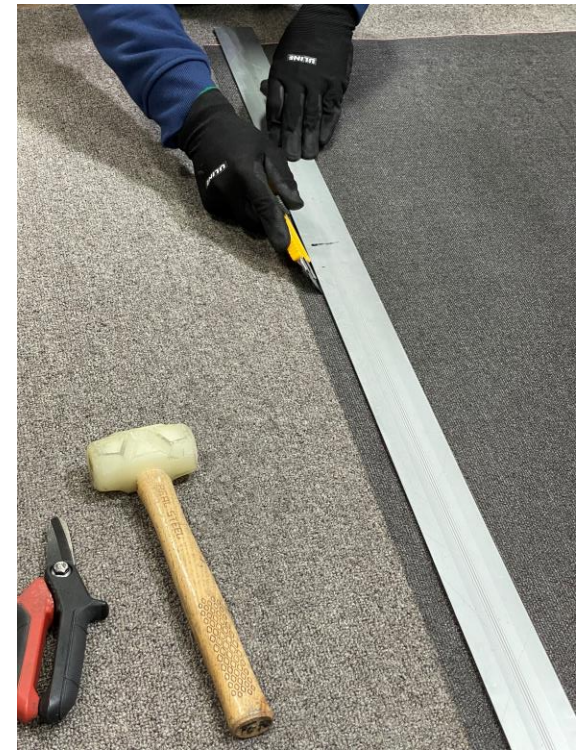


4. Attach pull-bar endcap



5. Cut other side of mesh square

Mark 5/8" in



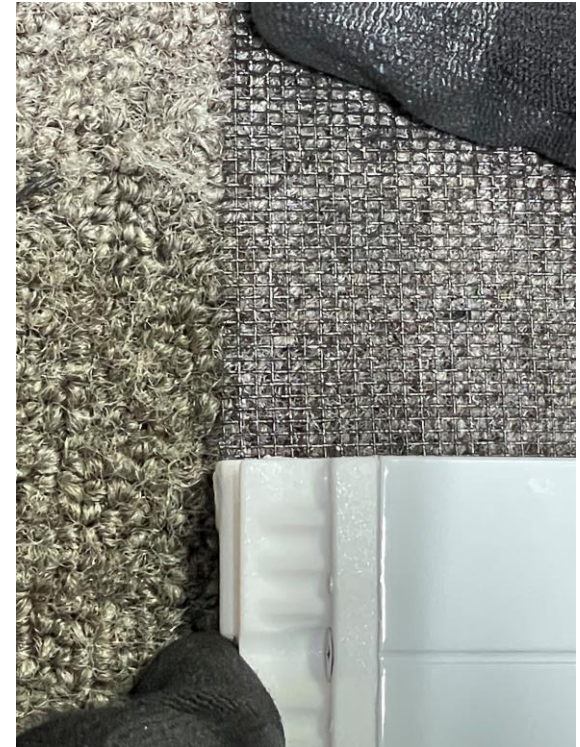
5. Cut other side of mesh square



6. Cut spline at angle



7. Attach pull-bar endcap



8. Rotate on table 180°



9. Attach mesh to roll-tube, aligning red thread with line on roll-tube



9. Attach mesh to roll-tube, aligning red thread with line on roll-tube



10. Roll mesh, keeping mesh edge aligned



11. Put housing onto rolled mesh



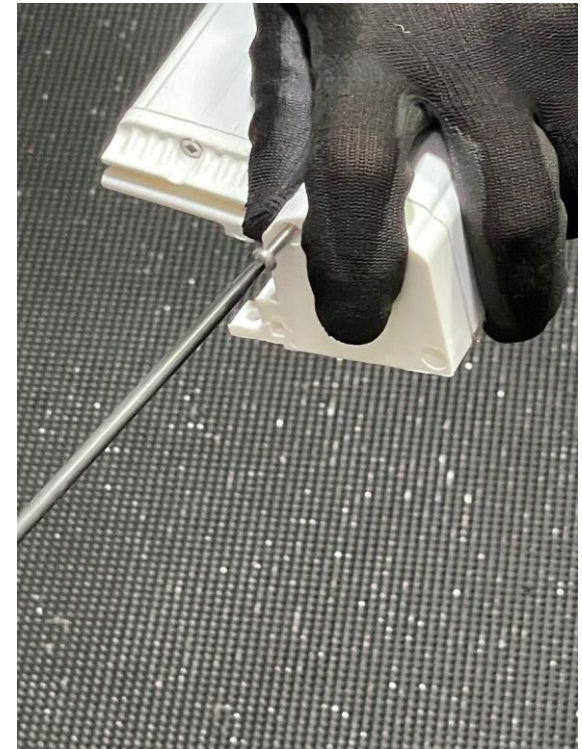
12. Use endcap to turn spring, then attach



Number of spring turns

Height	With idler	With slow-close
85"	16	22
99"	18	24
108"	20	26

13. Flip housing end-to-end & put housing endcap on



**14. Refeed mesh to align at the top,
whichever end will be the top**

