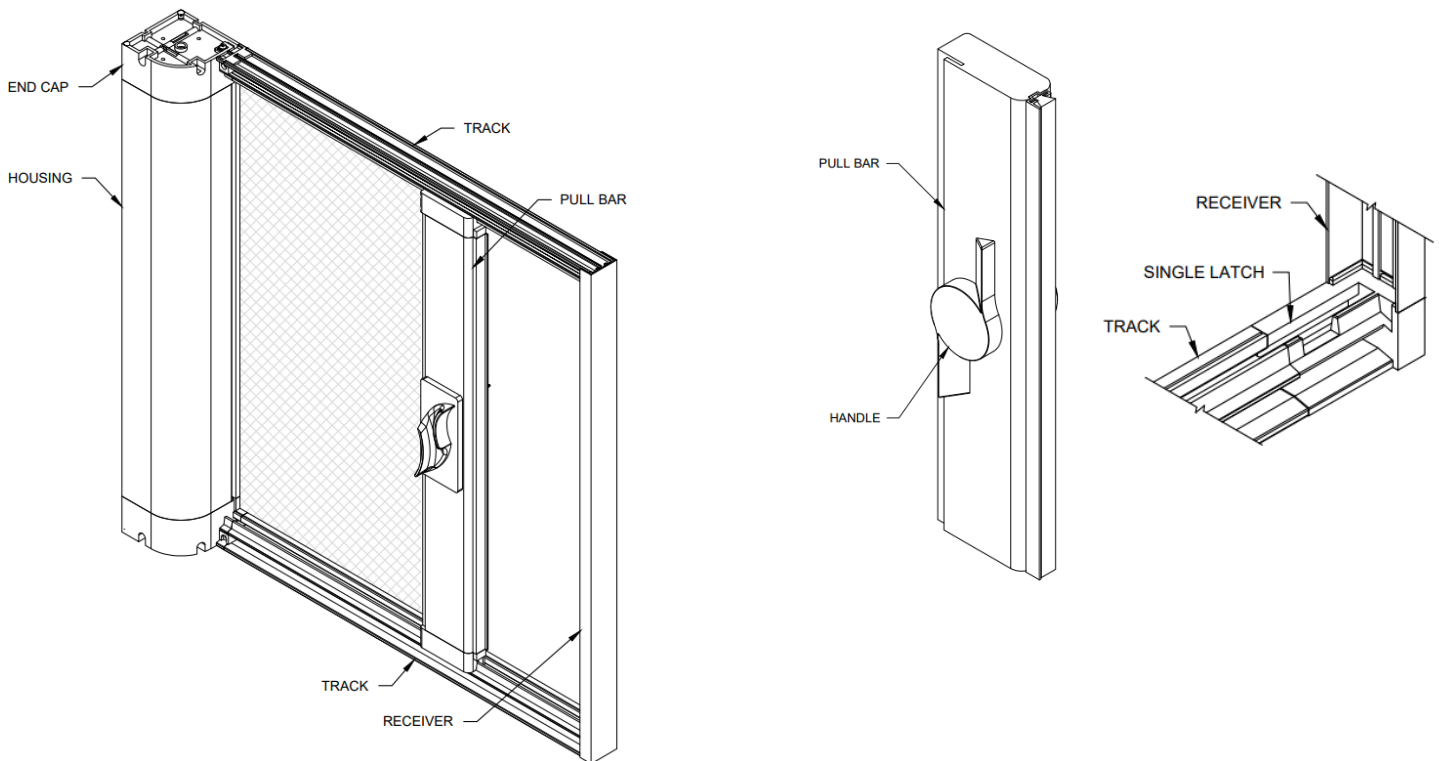


VistaView™ & VistaView™ Plus

Measuring Guide



Contents

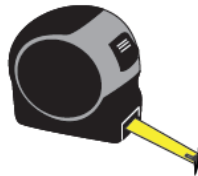
1. Tools Needed	3
2. Orientation & Width	3
3. Vertical Measurement.....	4
4. Handle Height	6
5. Other Part Dimensions.....	8

1. Tools Needed

Level



Tape Measure



Pencil



Laser Distance Measure (optional)



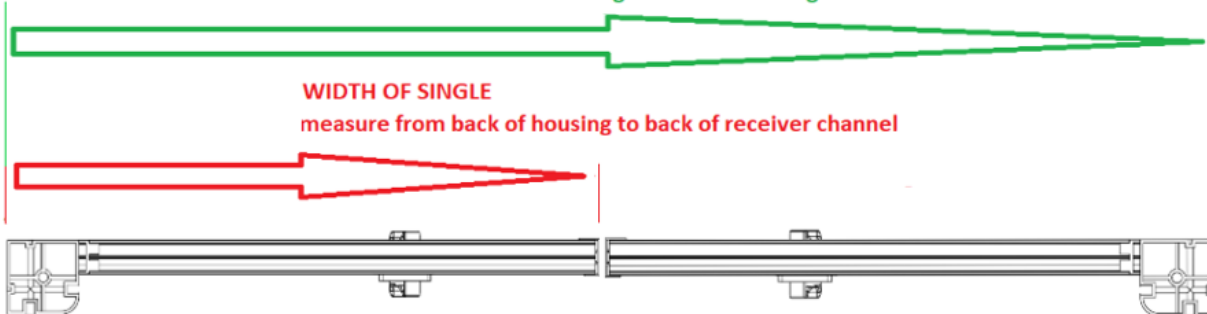
2. Orientation & Width

WIDTH OF DOUBLE

measure from back of housing to back of housing

WIDTH OF SINGLE

measure from back of housing to back of receiver channel



Order as **LEFT**

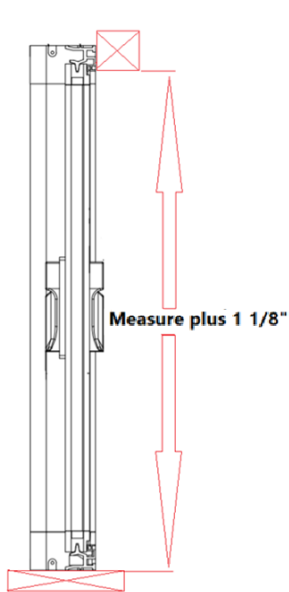
Order as **RIGHT**

3. Vertical Measurement

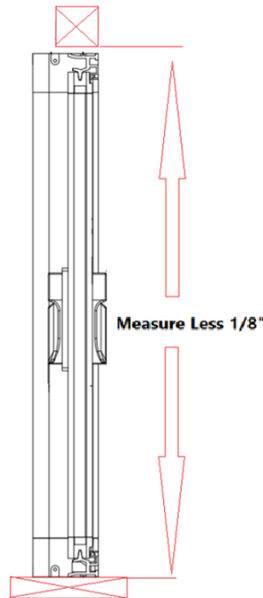
a) Vertical Measurement (Retrofit)

For all configurations, measure from “**finish floor**” to “**underside of header**” at multiple points along the opening. Record the **smallest measurement**.

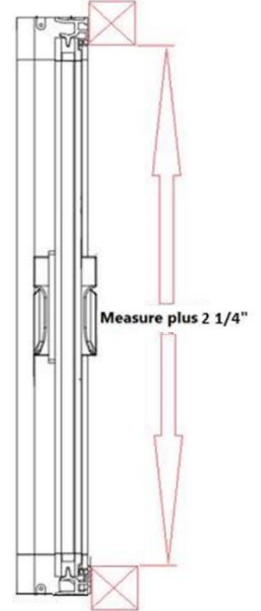
Upper Track - Surface Mount



Upper Track - Under-Header



Upper and Lower Tracks
- Surface Mount



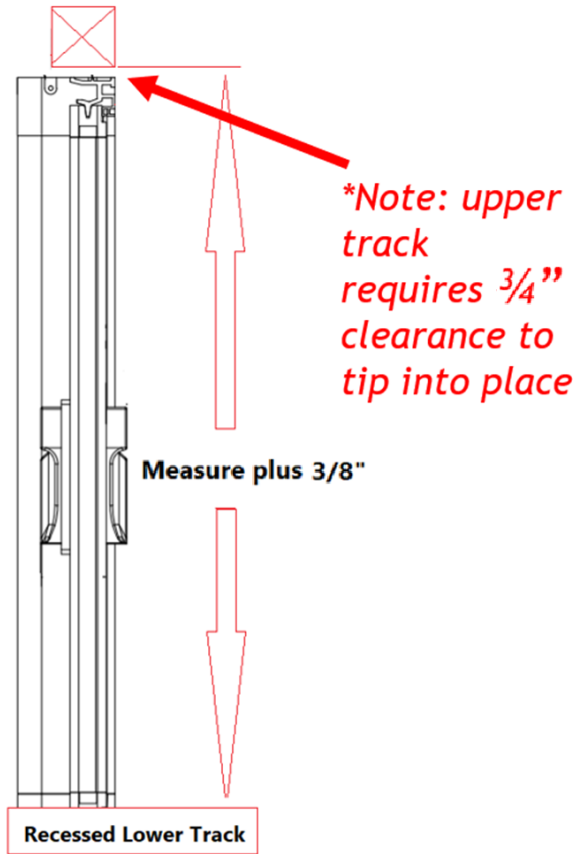
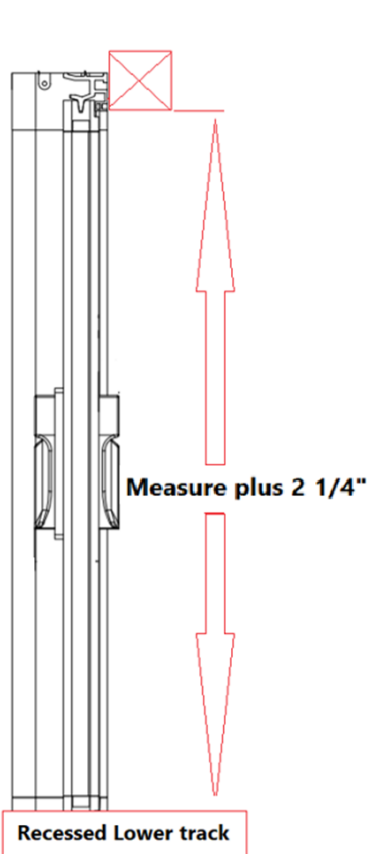
Applications	Deduction/Addition
Upper Track - Surface Mount	+ 1 1/8"
Upper Track - Under-Header	- 1/8"
Upper & Lower Tracks - Surface Mount	+ 2 1/4"

b) Vertical Measurement (with recessed lower track)

Units with a **recessed lower cup & track** require unique measuring methods.

Upper Track - Surface Mount

Upper Track - Under-Header



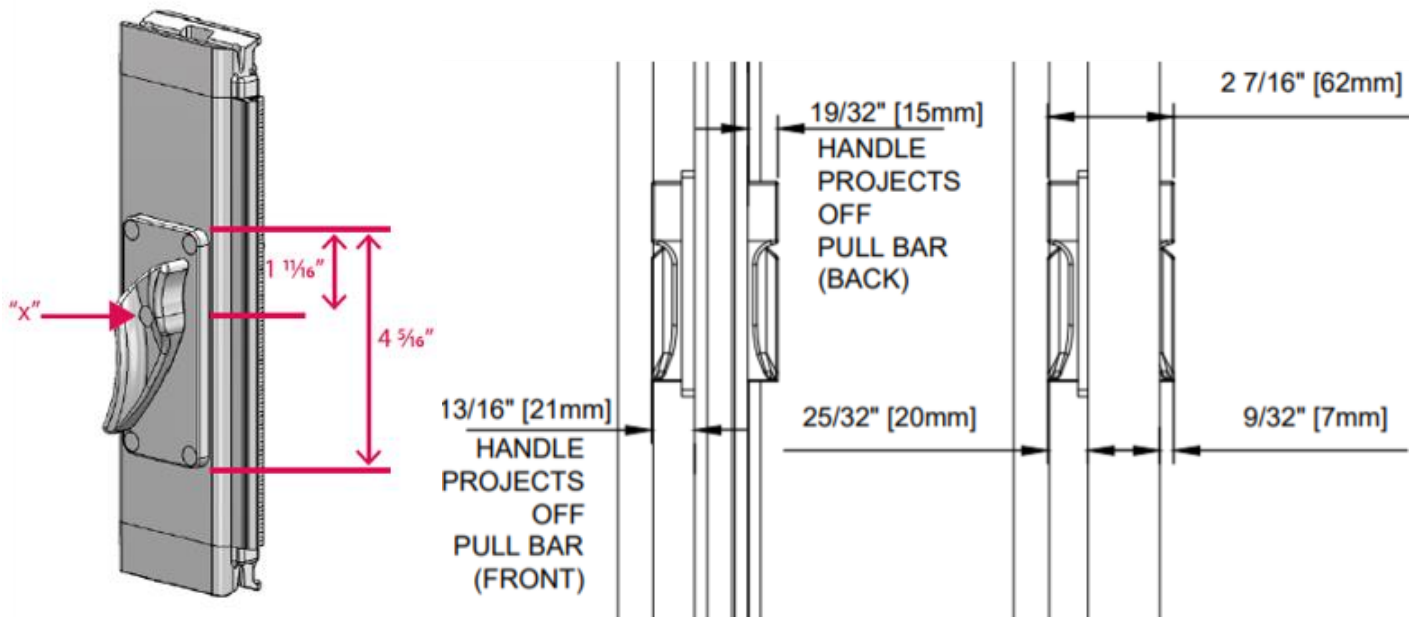
Applications (Recessed Lower Tracks)	Deduction/Addition
Upper Track - Surface Mount	+ 2 1/4"
Upper Track - Under-Header	+ 3/8"

The installer *does not need to calculate anything beyond this* when inputting the **final height measurement** for ordering.

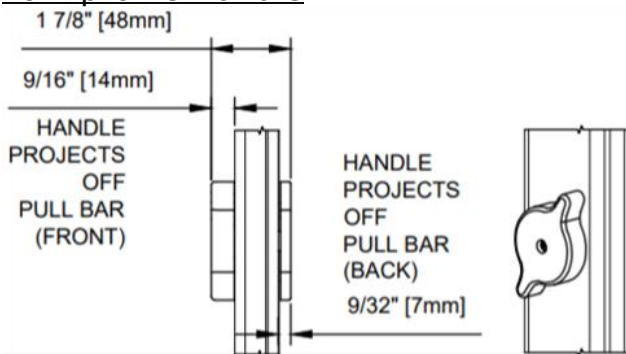
4. Handle Height

Handle height is the distance from “**bottom of unit**” to “**x**”.

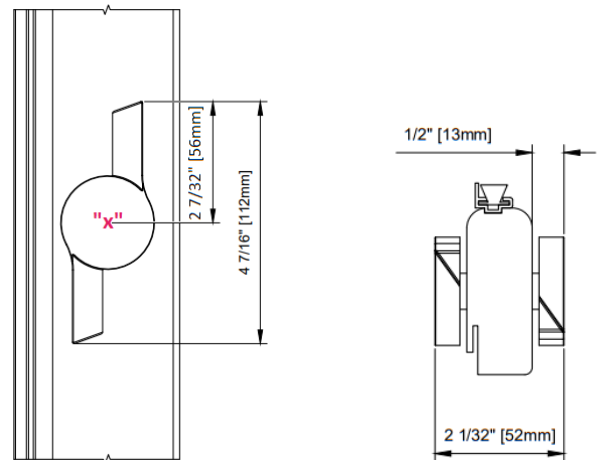
Standard Handle



Low-profile Handle



VistaView™ Plus Handle



On corner systems, the *handle heights* are **offset by 4 ½"**.



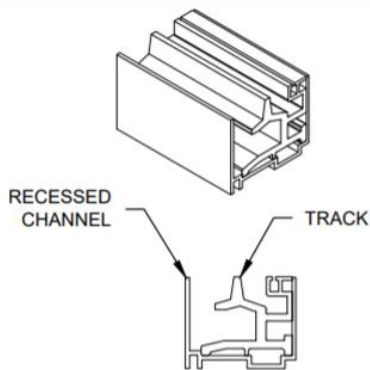
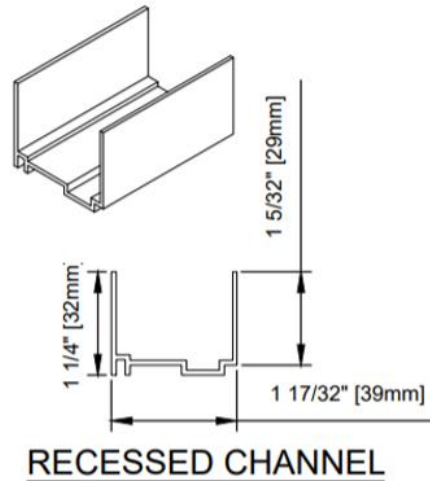
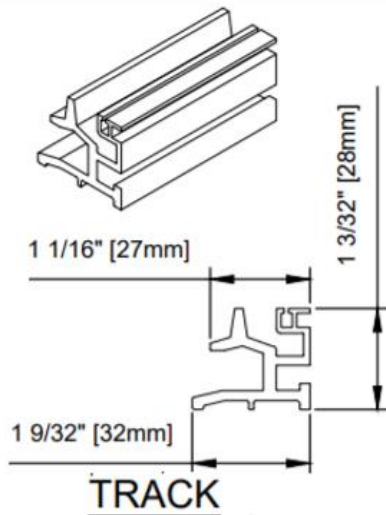
The standard **handle height** is 4" *below center of pull bar*.

The **handle height** may instead be ordered at a *custom height*.

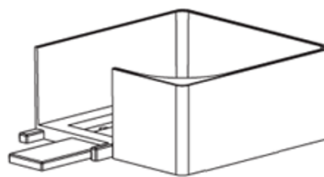
Handle heights are required for ordering.

***NOTE:** Ensure the **VistaView™ handle** will be able to clear existing door hardware if necessary. **9/32" projection beyond back-plane of unit** (Fig. 3 previous page).

5. Other Part Dimensions



TRACK IN RECESSED CHANNEL



- 60mm - 2 1/2" wide x 1 1/4" tall
- 70mm - 2 7/8" wide x 1 1/4" tall
- 80mm - 3 1/4" wide x 1 1/4" tall

Recessed cups



TRACK SCREW COVER

***NOTE:** For exterior applications regarding Recess Channel, Recessed Cups, and Tracks: Water egress is the responsibility of the general contractor or builder.