

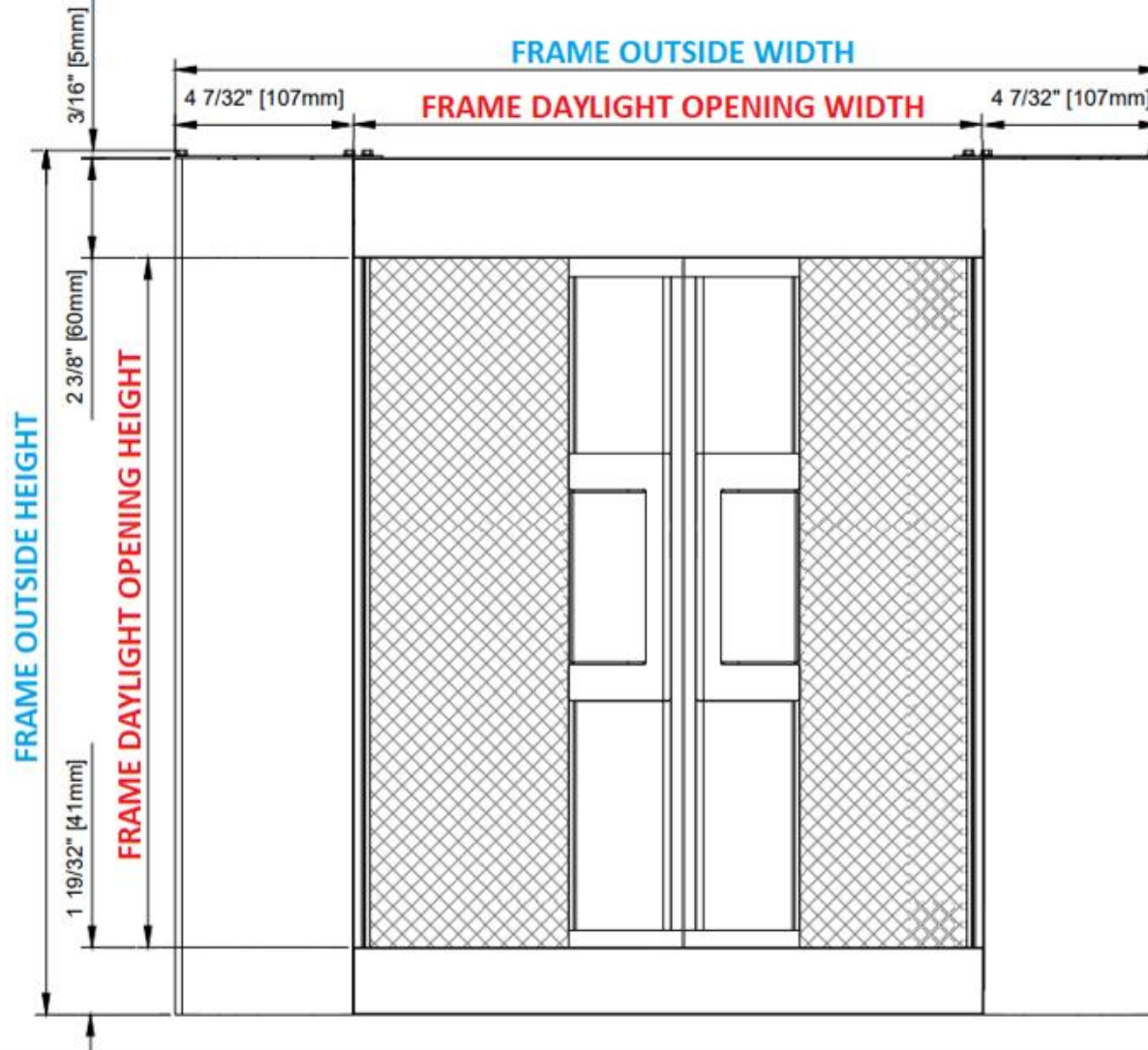
# Horizon

Integrated System

## **4-Sided Frame** **DOUBLE 100mm Screens** **Installation**

**Minimum 2 installers required**

**!** Call 604-299-4426, or email [support@wizardscreens.com](mailto:support@wizardscreens.com) prior to starting if you have any questions



Spray tracks *only* with dry silicone.

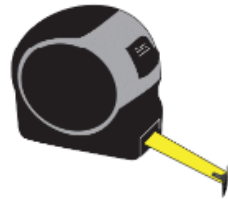
**FIRST**  
Confirm the frame is  
**plumb, level, straight,**  
**and square.**  
Adjust where necessary if  
possible.

## REQUIRED

Level



Tape Measure



Pencil



Shims



1.5mm Hex Key



Flat Pry Bar



9/64 and 1/8  
Drill Bits



#1 and #2  
Robertson  
Driver Bits



Dry Silicone  
Spray



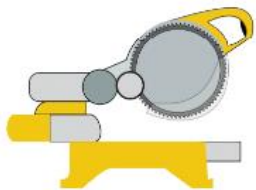
2-way Laser Level Kit



Utility Knife



Chop Saw



Drill



Step Ladder



Vacuum



Small  
Countersink Bit



## RECOMMENDED

Laser Distance Measure



1. Remove black spline



2. Remove **temporary sill covers.**



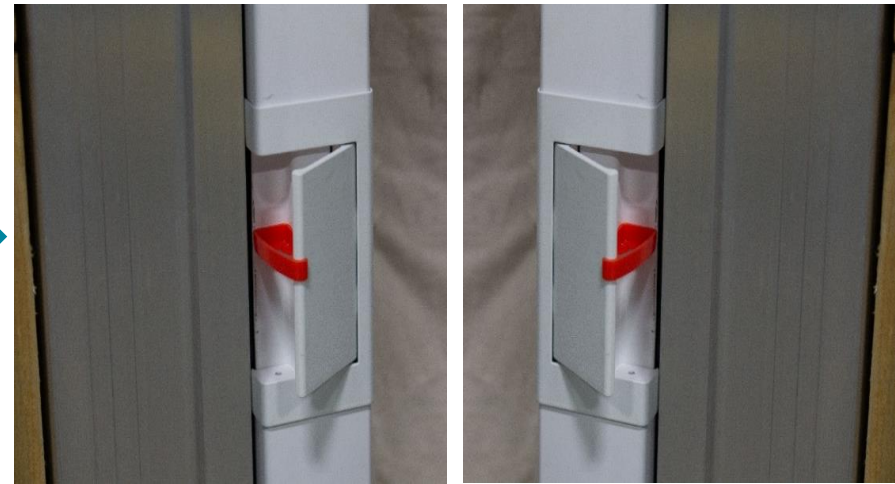
3. Remove **temporary jamb fillers.**



## 1. Install housings.



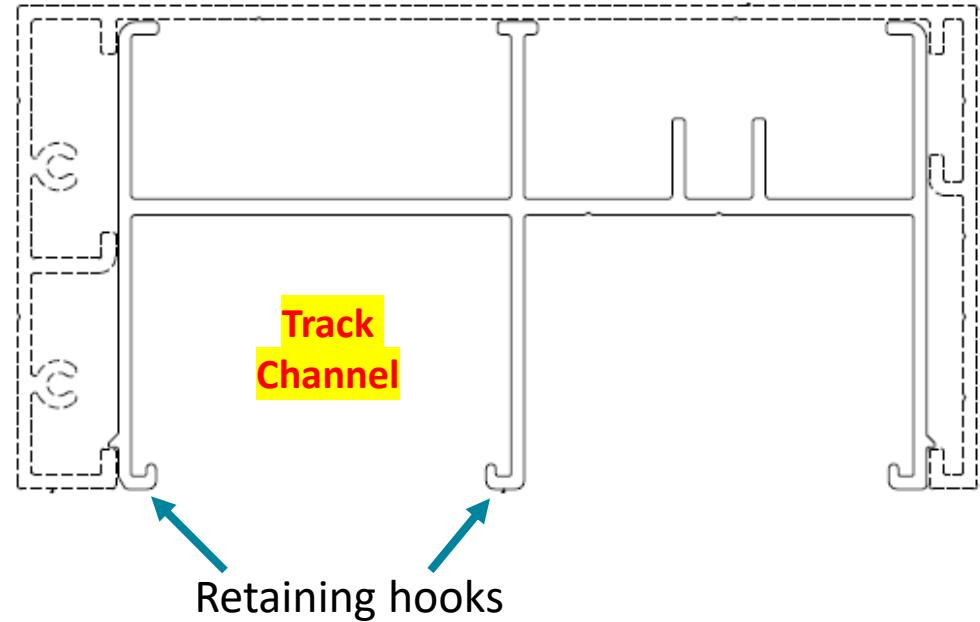
## 2. Insert **RED** wedge in handle to disengage brakes.



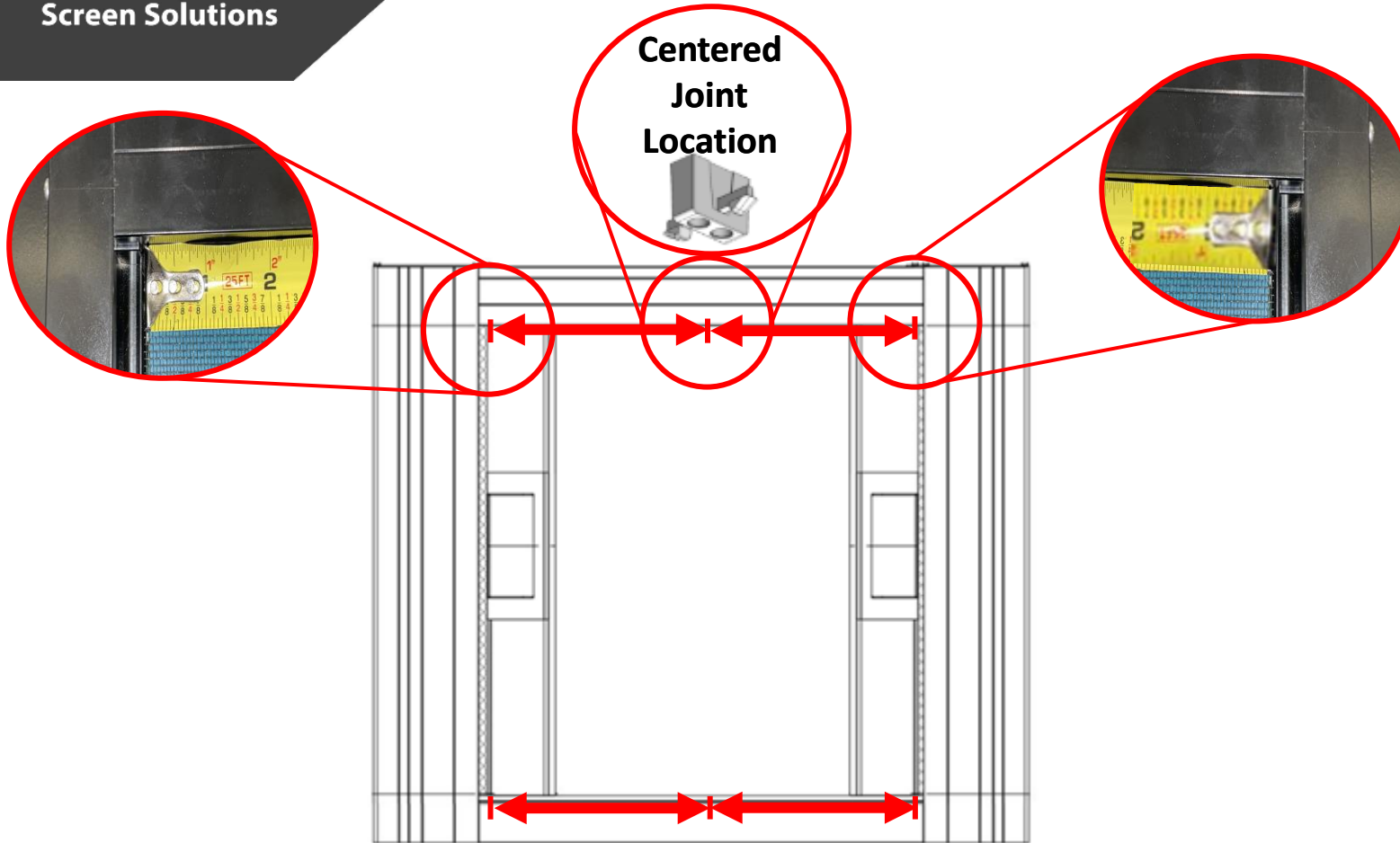
## 1. Install header inserts.



**\*Orient header insert as shown**



Total header insert length will be **1/8" shy**.  
This means the housing will be removable  
without having to remove the header  
insert. Simply lift unit and tilt bottom out.

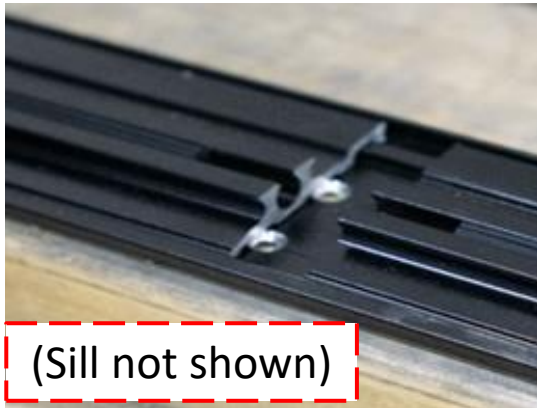


**\*\*\*FIRST, push header insert *fully against* housing, which must not lean out of jamb. Do not accidentally measure too short.\*\*\***



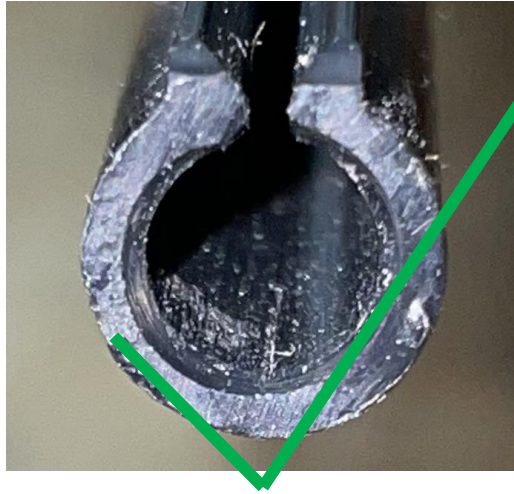
## Cut tracks:

1. Measure between **housing endcap** and **desired joint location**. Record lengths.
2. *Subtract 5/16"* (half track joiner thickness) from each length and cut.
3. **Track runners** cut shorter to fit between **housing** and **latch**.



**ALTERNATIVELY:**  
Temporarily affix **track joiners** and measure to **latches**.

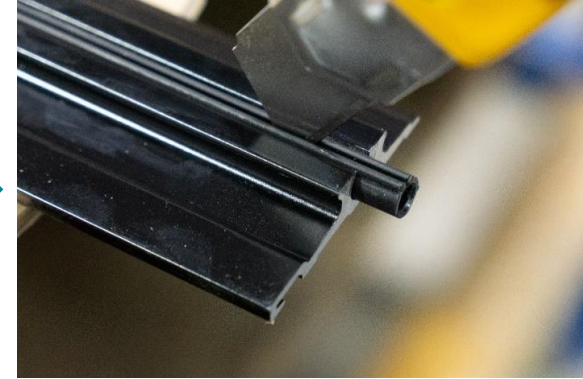
**\*DO NOT CUT TRACKS AND RUNNERS TOO SHORT\***



*Slightly counter-sink.*

*Barely trim the corners off.*

*Deburr and clear debris.*

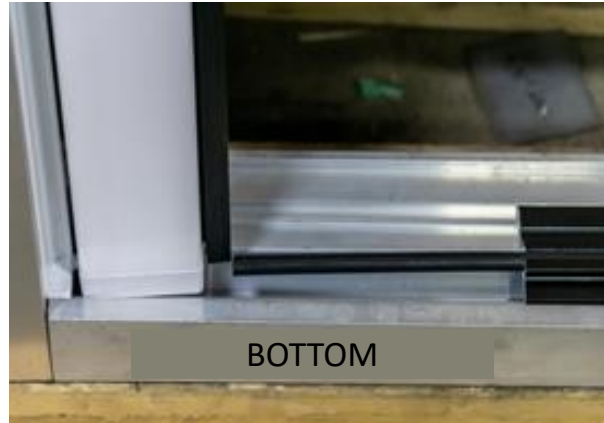


1. Grooves free of dirt.

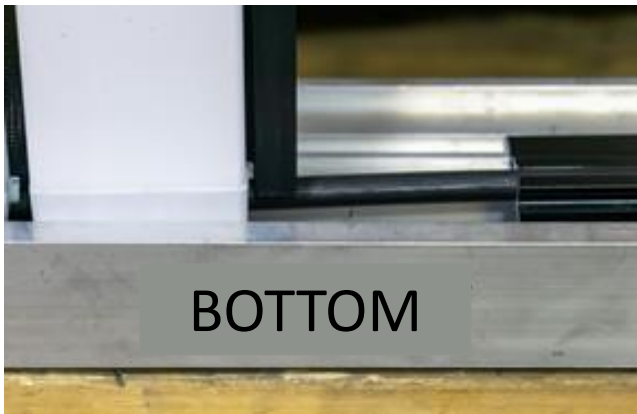


**NO DIRT!**

2. Lift **pull-bar**. Feed extended **track runner** along **zipper**.



3. Lower **pull-bar**.



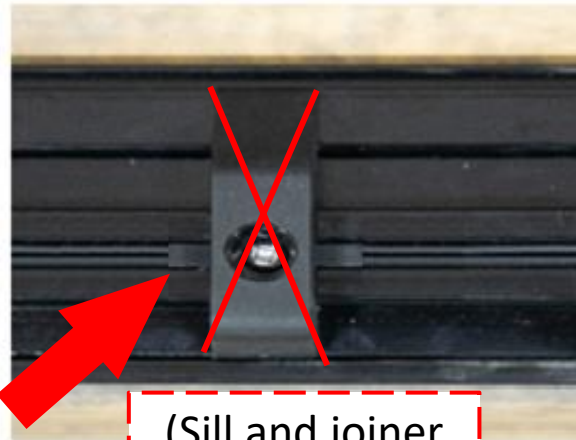
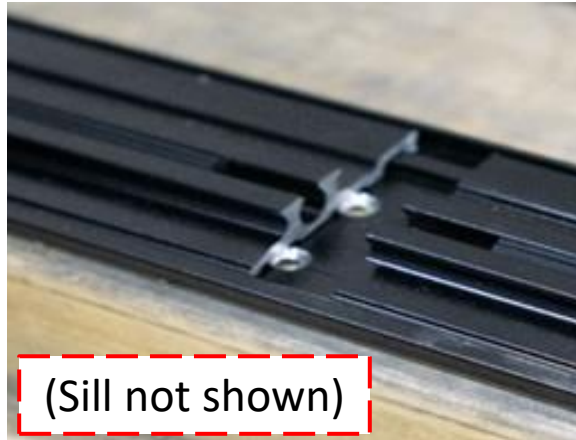
4. Feed **track** through **pull-bar**, pushing fully against **housing** – **no gaps**.



5. Interlock **tracks** with **sill**.



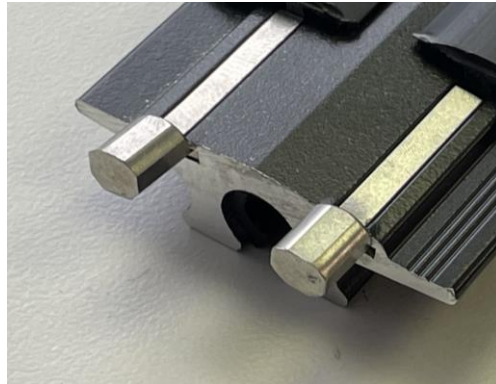
6. Attach **lower track joiner**.



7. Insert **spline** into groove.



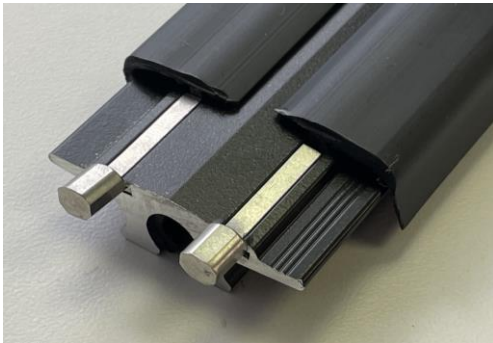
1. Insert **track limiters** into **upper track wing slots** on housing end **fully**.



**! If track limiter is *not* fully inserted, screw head may interfere**

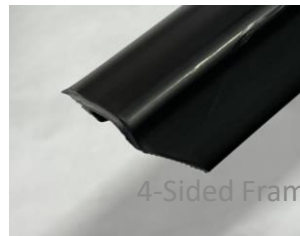


2a. Butt wings against track limiters.



2b. Cut off insert part the length of track limiter.

**OR**



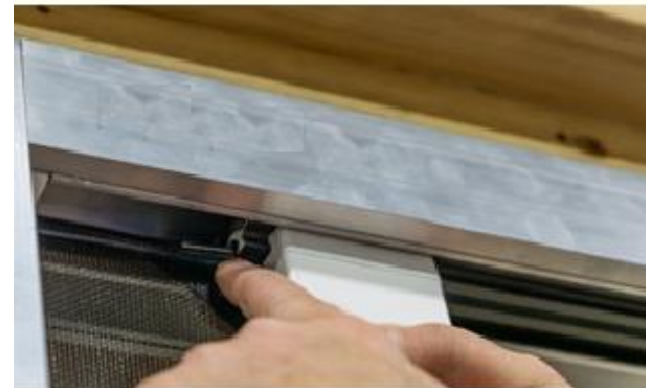
**Cut corners of track wings at angle**

**DO NOT CUT TOWARDS YOURSELF!!!**

1. Insert **upper tracks** into the **header insert track channel** and release them. **Tracks** will initially overlap.



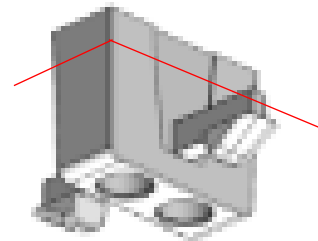
2. Feed **track runner** along zipper, then **track** through **pull-bar**, pushing fully against housing endcap – **no gaps**. Repeat on other side.



3. Attach **upper track joiner**. Ensure **tracks** float freely.



**!IMPORTANT:** It may be necessary to cut the *top* of the upper track joiner **shorter**. Test functionality first.



This will be **magnet**,  
*not* mohair.



## TEST THE UNIT

<b>Check the following:</b>	<b>✓ or ✗</b>
Frame is Plumb, Level, Square, and not twisted?	
Tracks are level, parallel, and plumb side-to-side and front-to-back?	
Housing on the ground AND plumb?	
Housing mesh slot has not been squeezed during the install?	
Tracks are fully against the housing?	
The track limiters are on the entry end of the upper track?	
Tracks are fully against the housing?	
Track runners are not cut too short?	
Zippers are following through the housing endcap keyholes?	
Track runners have been sprayed inside with <b>dry silicone</b> ?	

**!** If any problems are not resolved, call 604-299-4426, or email [support@wizardscreens.com](mailto:support@wizardscreens.com) **before leaving site!**

If necessary, review **The Horizon Troubleshoot Manual**