

Horizon

Integrated System

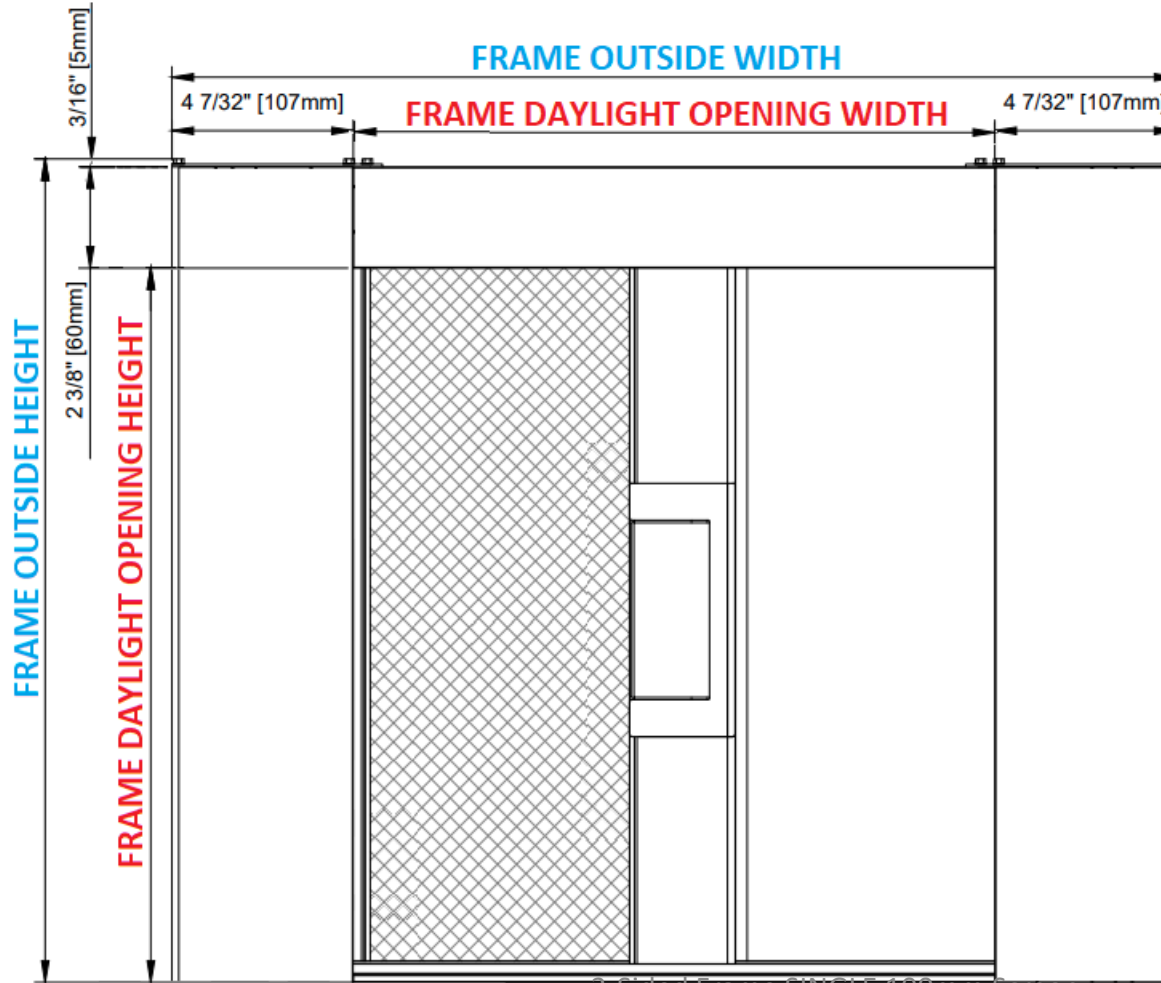
3-Sided Frame

SINGLE 100mm Screen

Installation

Minimum 2 installers required

! Call 604-299-4426, or email support@wizardscreens.com prior to starting if you have any questions



Spray tracks *only* with dry silicone.

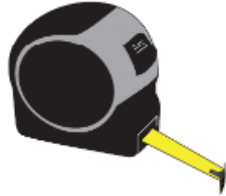
1. Confirm the frame is **plumb, level, straight, square, and free of twist**. Adjust where necessary if possible.
2. **Bottom of housing** must *not* be lower than **bottom of jamb**.
3. Lower track must be established **level and straight**.
Otherwise:
 - the screen may sag a little; *and/or*
 - the pull-bar may bind

REQUIRED

Level



Tape Measure



Pencil



Shims



Flat Pry Bar



1.5mm Hex Key



Hacksaw



9/64 and 1/8
Drill Bits



#1 and #2
Robertson
Driver Bits



Dry Silicone
Spray



2-way Laser Level Kit



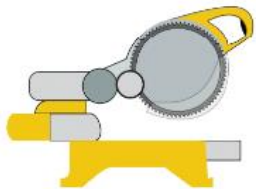
Filer



Utility Knife



Chop Saw



Drill



Step Ladder



Vacuum



Small
Countersink Bit



RECOMMENDED

Laser Distance Measure

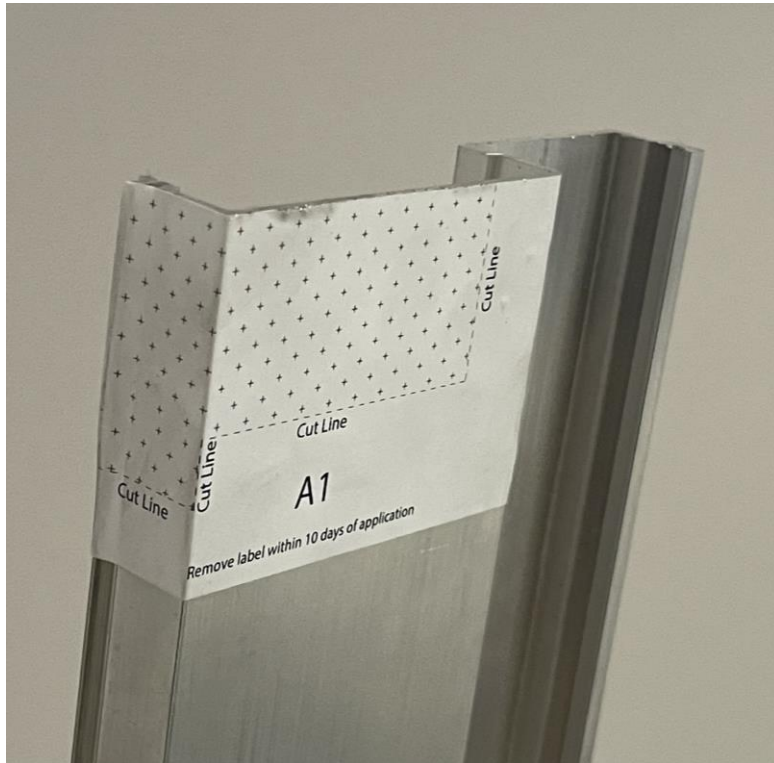


Remove **temporary, mill jamb fillers.**



1. Apply label on *backside* of **jamb filler**.

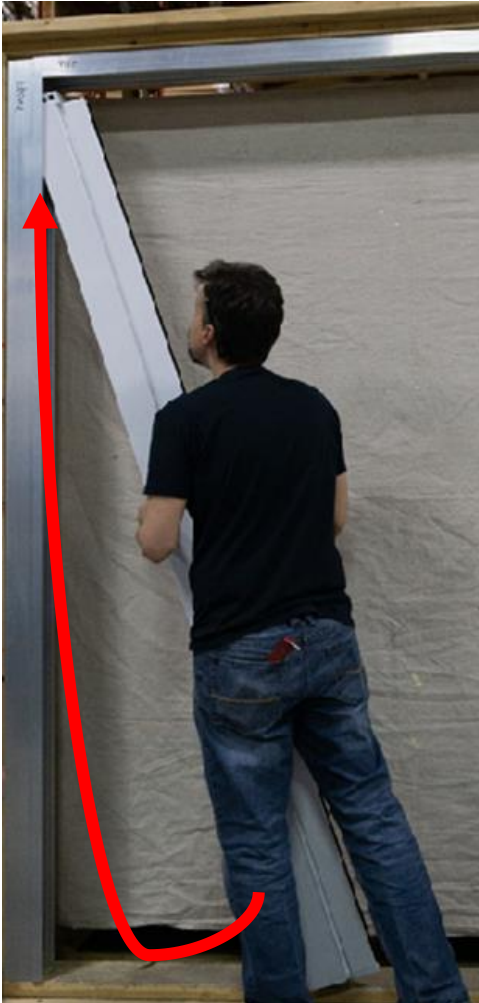
Notch top of **jamb filler** along lines.



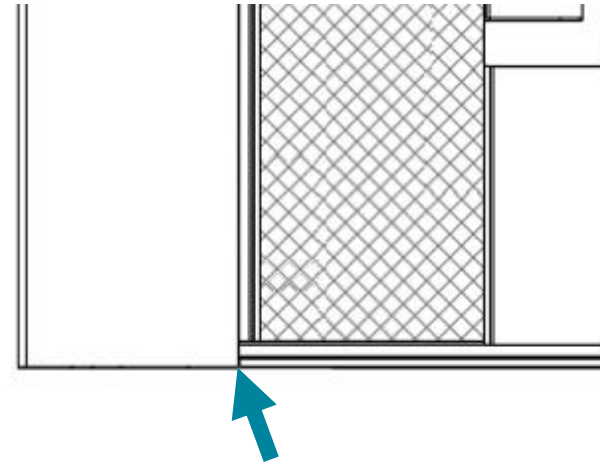
2. Install **jamb filler**.



1. Install **housing**.

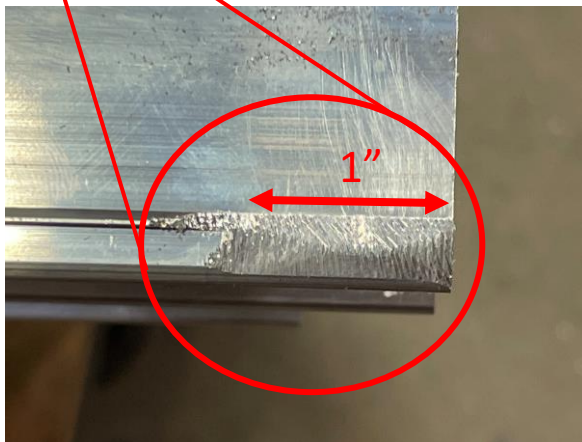
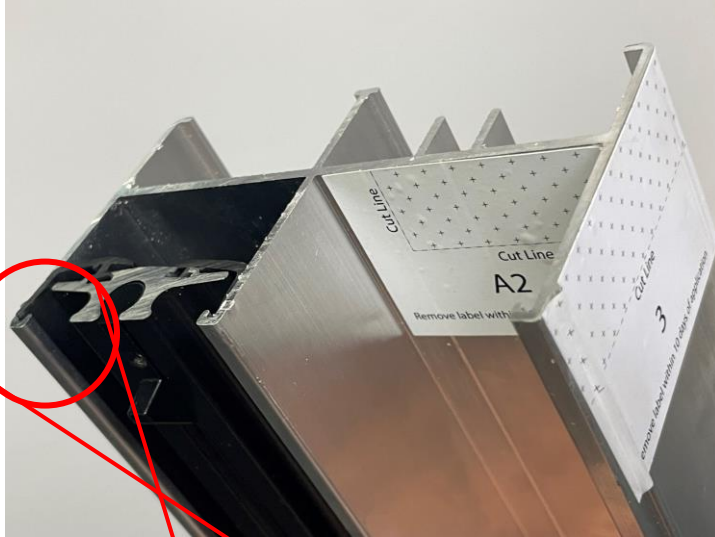


2. Insert **RED** wedge in handle to disengage brakes.



Housing and track must be flush with bottom of jamb.

1. Apply labels and cut along lines.

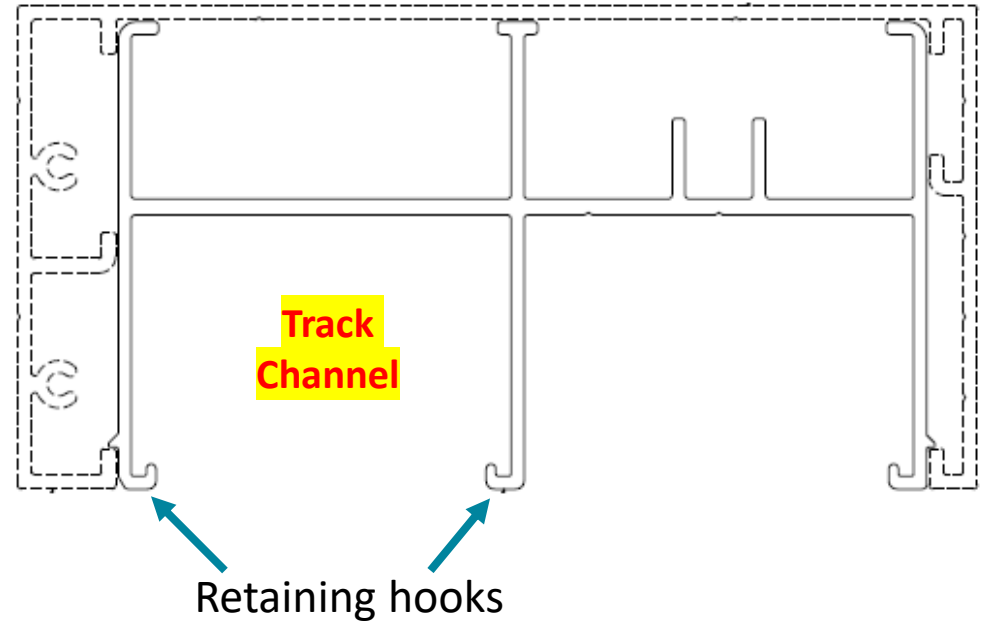


2. File flat **1"** external lip.

1. Install header inserts.

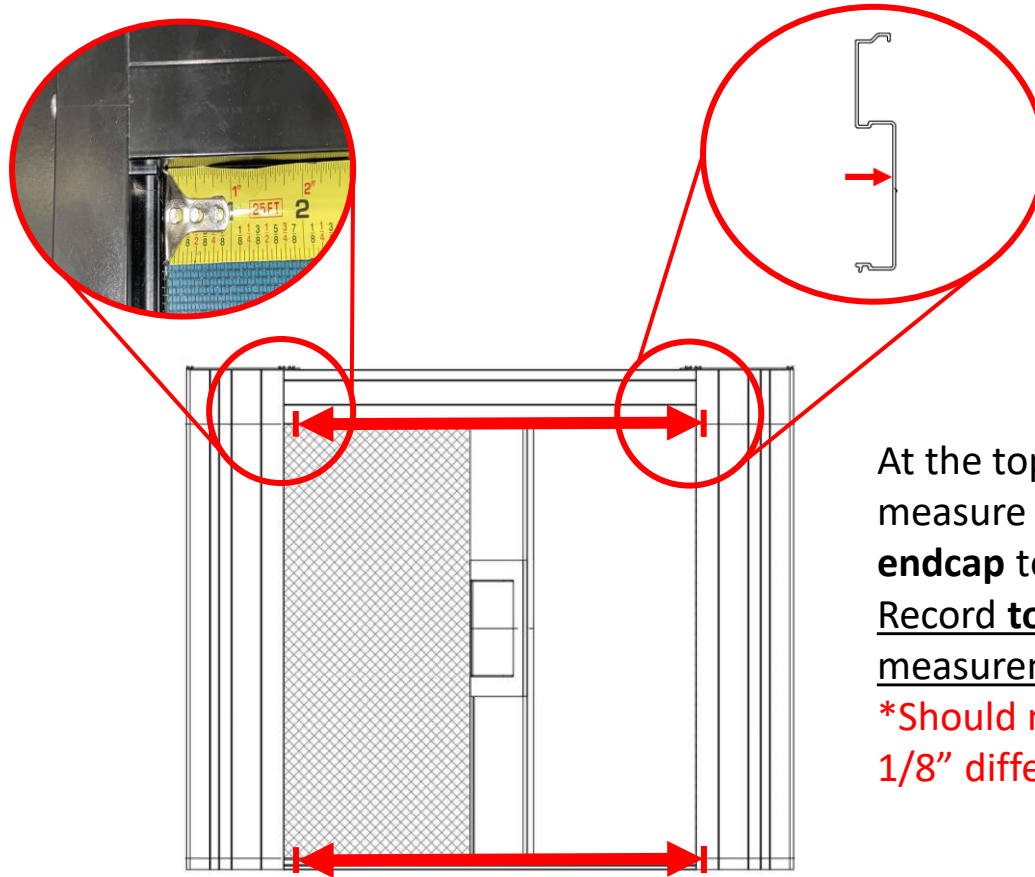


***Orient header insert as shown**



Total header insert length will be **1/8" shy**.
This means the housing will be removable
without having to remove the header
insert. Simply lift unit and tilt bottom out.

Laser Distance Measure



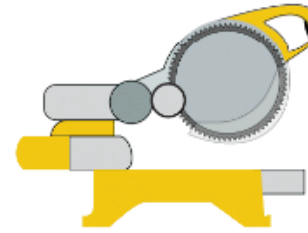
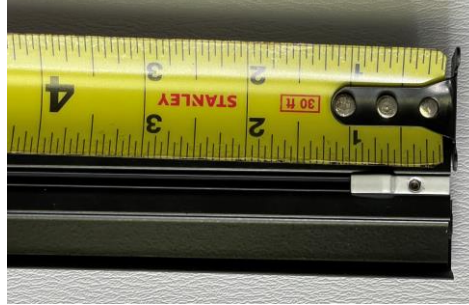
At the top *and* bottom, measure from **housing endcap** to **jamb filler indent**. Record top and bottom measurements.

**Should not be more than 1/8" difference.*

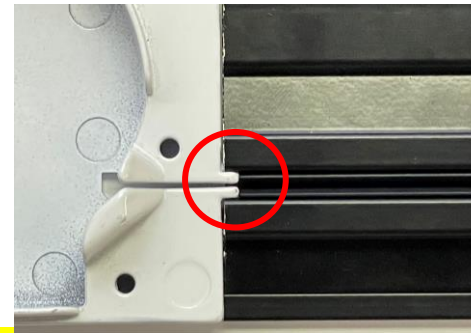
*****FIRST, push header insert *fully against* housing, which must *not* lean out of jamb. Do not accidentally measure too short.*****

Cut tracks:

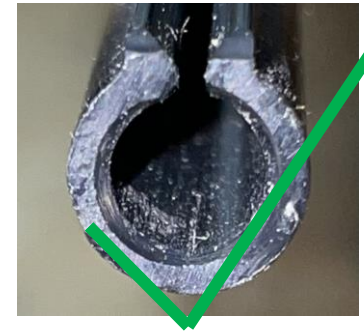
1. Affix latch.
2. Measure and mark.
3. Push **track runner** against **latch**, then cut **track** to recorded measurement.
4. Repeat.
5. Cut extra 1/8" off **lower track runner**.



Lower



Entry end



DO NOT CUT TRACKS AND RUNNERS TOO SHORT

Prepare track runner **entry end**:

Slightly counter-sink.



16 September 2024

Barely trim the corners off.



3-Sided Frame SINGLE 100mm Screen -
Installation

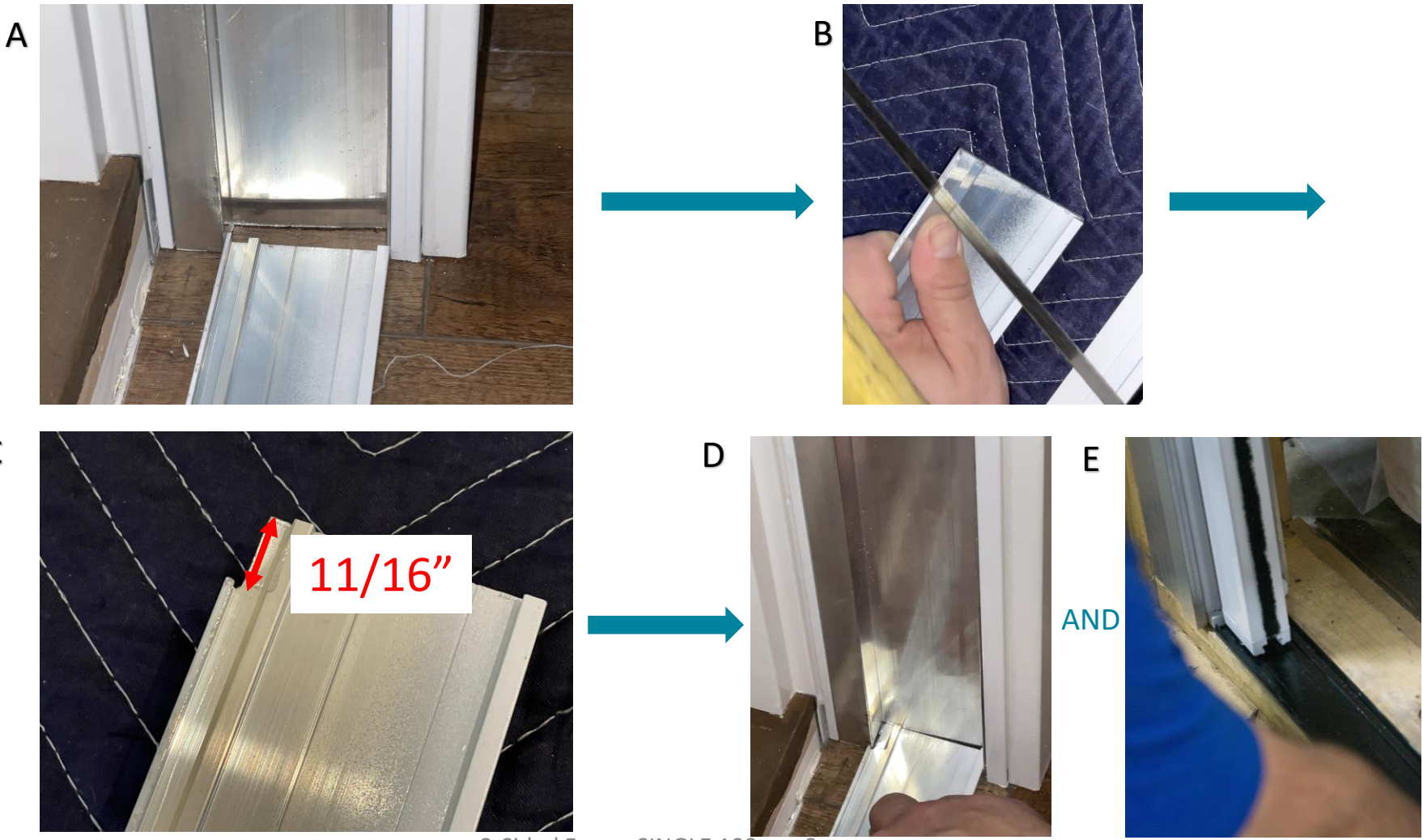
Deburr and clear debris.



11

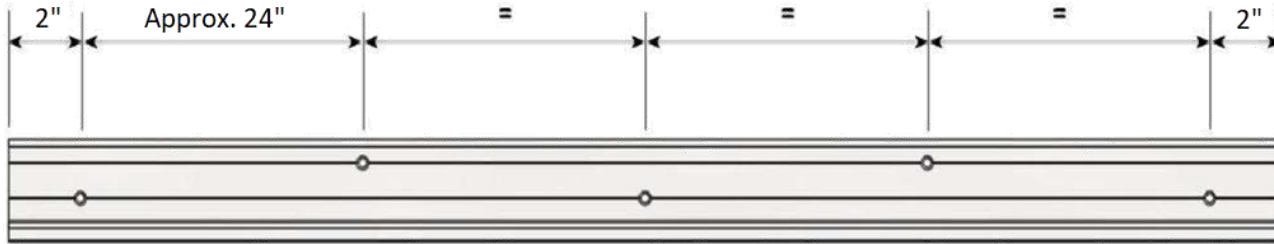
Not applicable if completed during frame installation.

Notch the receiver end of the **lower track mount** to fit.

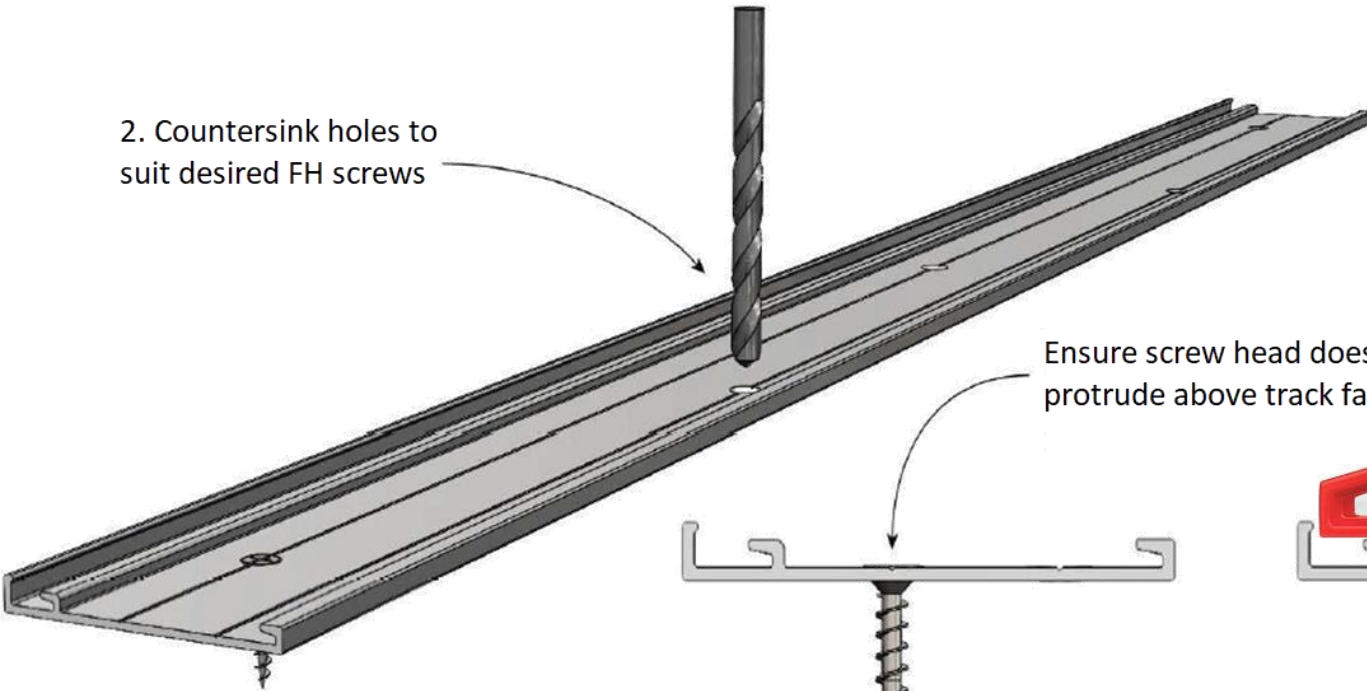


Not applicable if completed during frame installation.

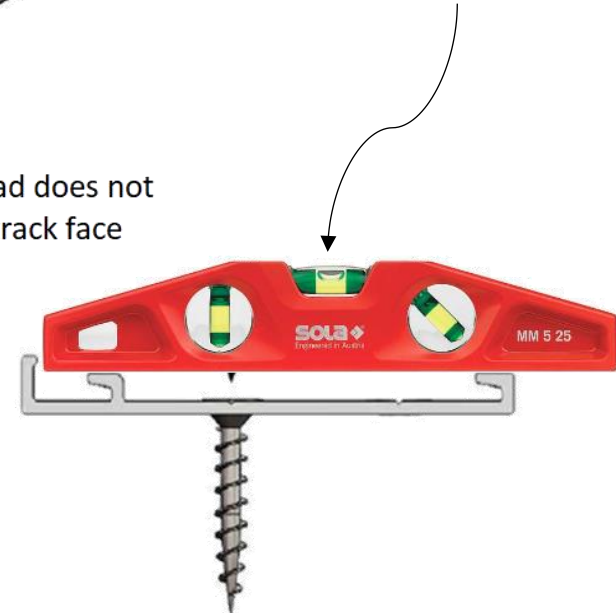
1. Predrill holes like shown or in pairs



2. Countersink holes to suit desired FH screws



Check level front-to-back. Shim if necessary.



1. Remove track cut-off.



2. Lift **pull-bar**. Slide **track runner** along **zipper**.



3. Feed **lower track** through **pull-bar**.



4. As you lay **track** down...



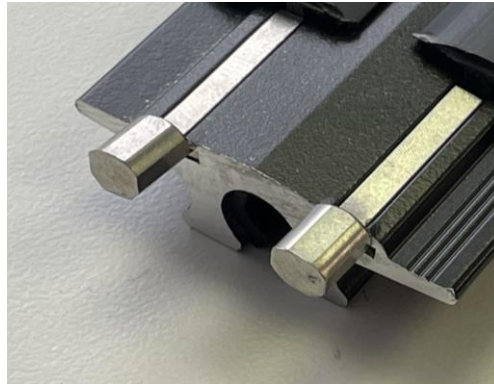
5. ...push fully against **housing** – **no gaps**.



6. Insert **spline** into groove.



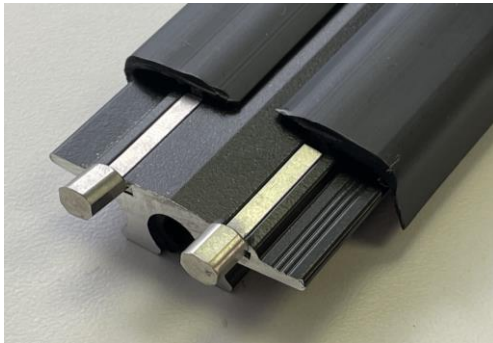
1. Insert **track limiters** into **upper track wing slots** on housing end **fully**.



! If track limiter is *not* fully inserted, screw head may interfere

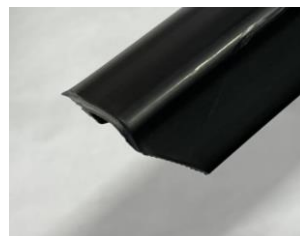


2a. Butt wings against track limiters.



2b. Cut off insert part the length of track limiter.

OR

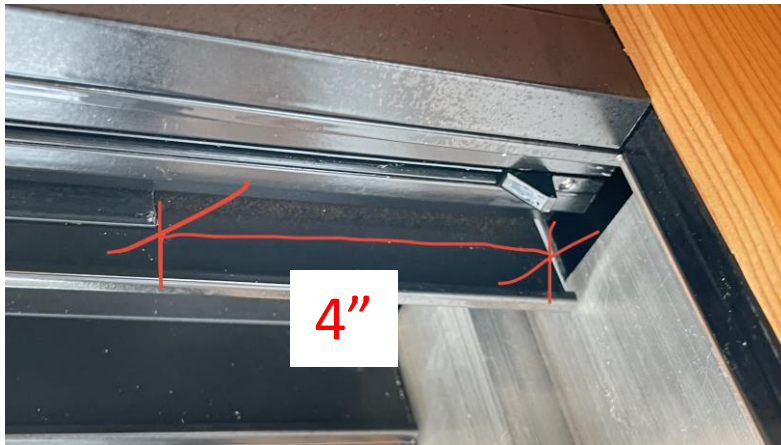


Cut corners of track wings at angle

DO NOT CUT TOWARDS YOURSELF!!!

RECOMMENDED

1. At receiver end, cut **track wings** 4" shorter. This allows **track** to more easily pass above **jamb filler** when installing.



2. Insert the **upper track** at angle into the **jamb**. Ensure **track** floats freely in **track channel**. Move to back of **jamb**.



OPTIONAL

To more easily install the **upper track**, you may *temporarily remove* the **housing** after you have recorded the measurements (see step "Record Track Measurements"). After you have inserted the **track**, put **housing** back in. You will *not* have to remove the **header insert** as there is a 1/8" gap, allowing you to tilt **housing** in. This would have to be done *before* the **lower track** is installed.

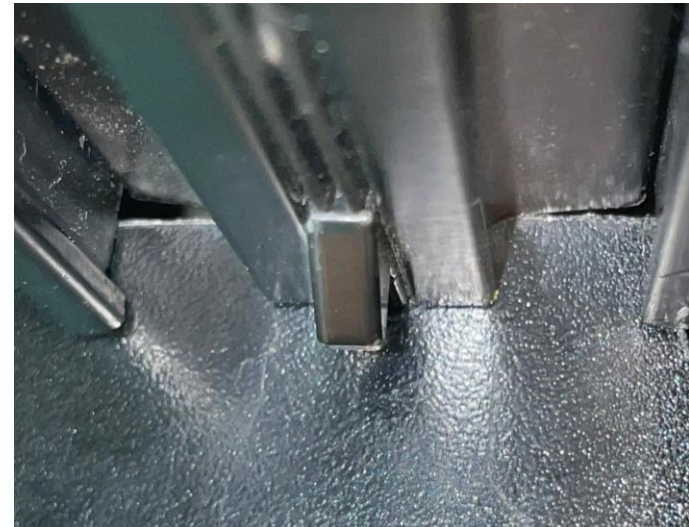
3. Feed **track runner** along **zipper**, then **track** through **pull-bar endcap**, pushing **fully** against housing endcap – **no gap**.



4. Ensure **track** floats freely.



5. Ensure **jamb filler** is *not* notched too low & **no gap** between **track** and **jamb filler**.



TEST THE UNIT

Check the following:	✓ or ✗
Frame is Plumb, Level, Square, and not twisted?	
Tracks are level, parallel, and plumb side-to-side and front-to-back?	
Housing on the ground AND plumb?	
Housing mesh slot has not been squeezed during the install?	
Tracks are fully against the housing?	
The track limiters are on the entry end of the upper track?	
Tracks are fully against the housing?	
Track runners are not cut too short?	
Zippers are following through the housing endcap keyholes?	
Track runners have been sprayed inside with dry silicone ?	

! If any problems are not resolved, call 604-299-4426, or email support@wizardscreens.com **before leaving site!**

If necessary, review **The Horizon Troubleshoot Manual**