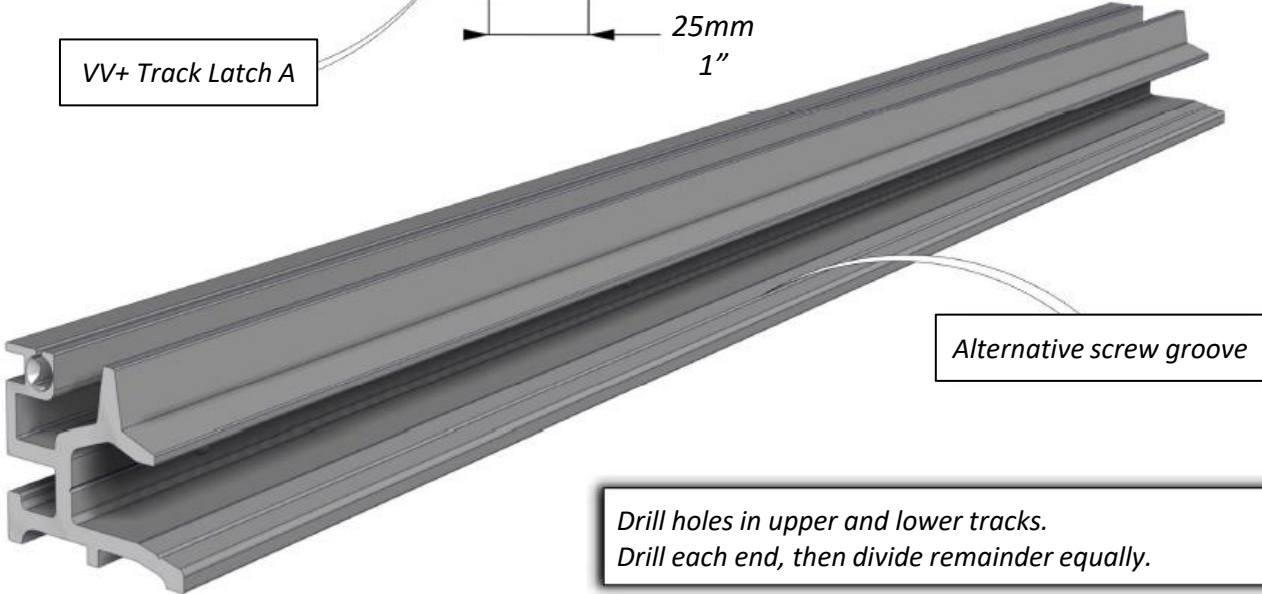
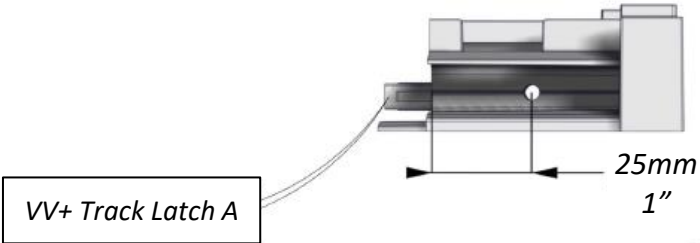
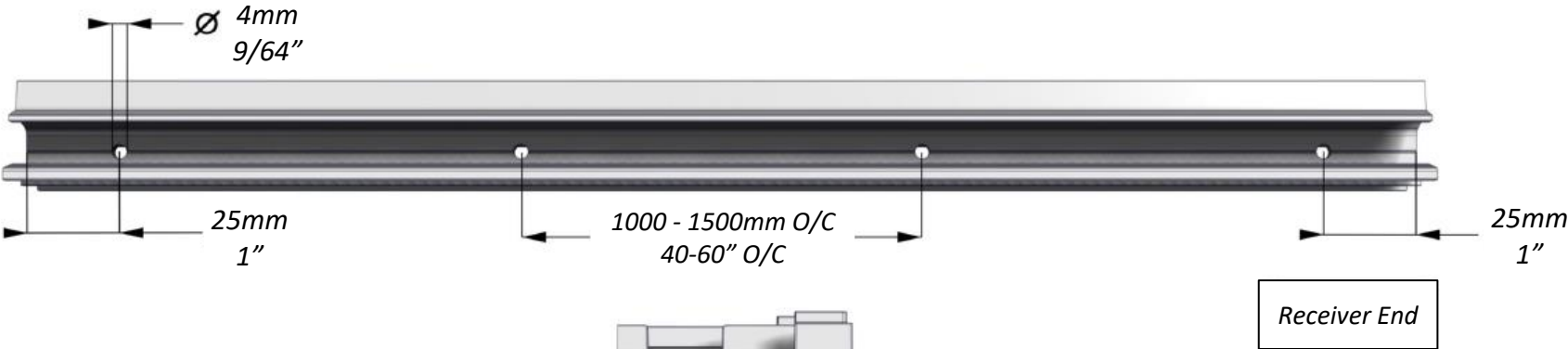




VISTA VIEW  
PLUS™

Reveal-Fit  
Installation Guide

# STEP-1

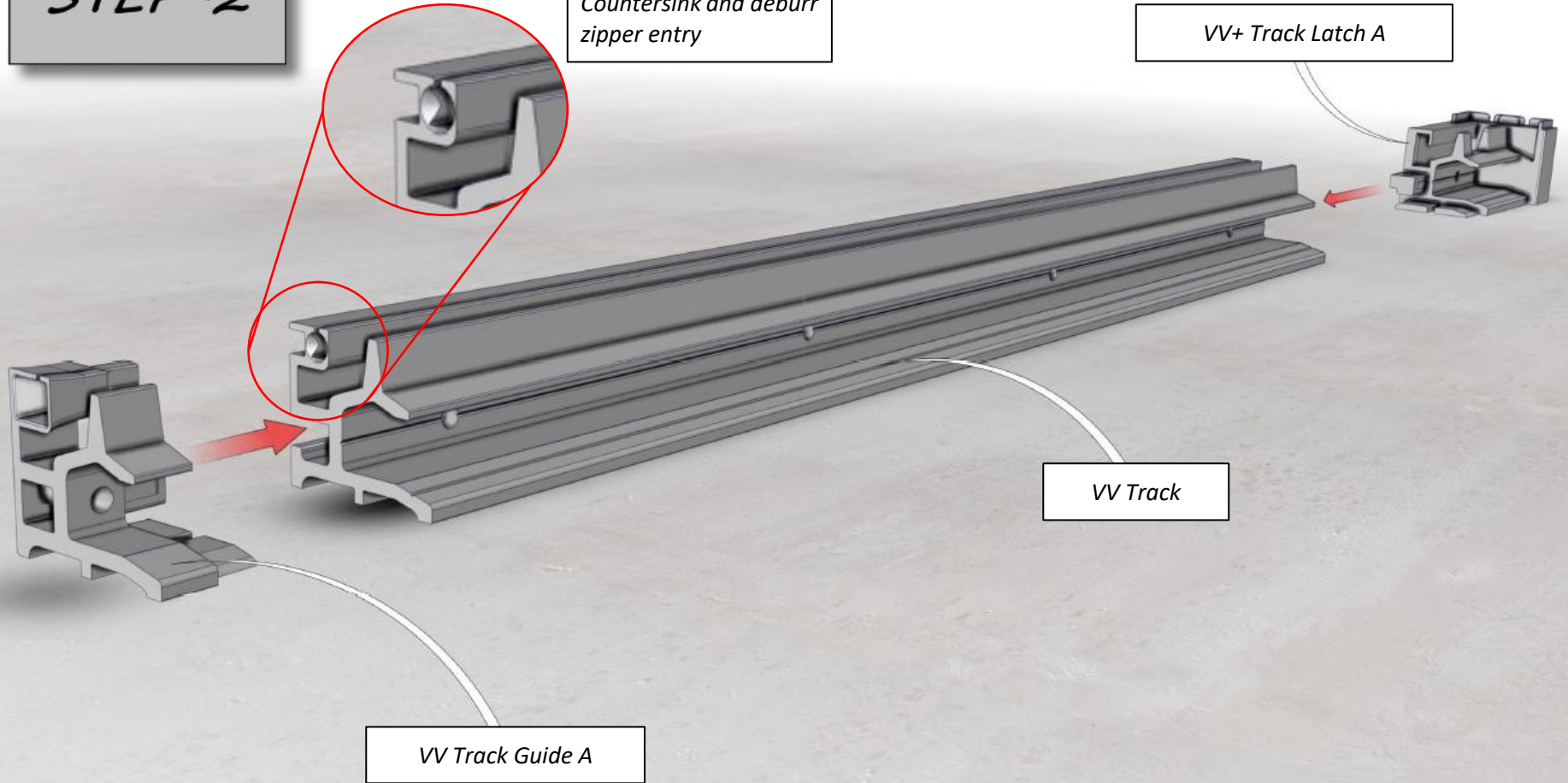


Drill holes in upper and lower tracks.  
Drill each end, then divide remainder equally.

## STEP-2

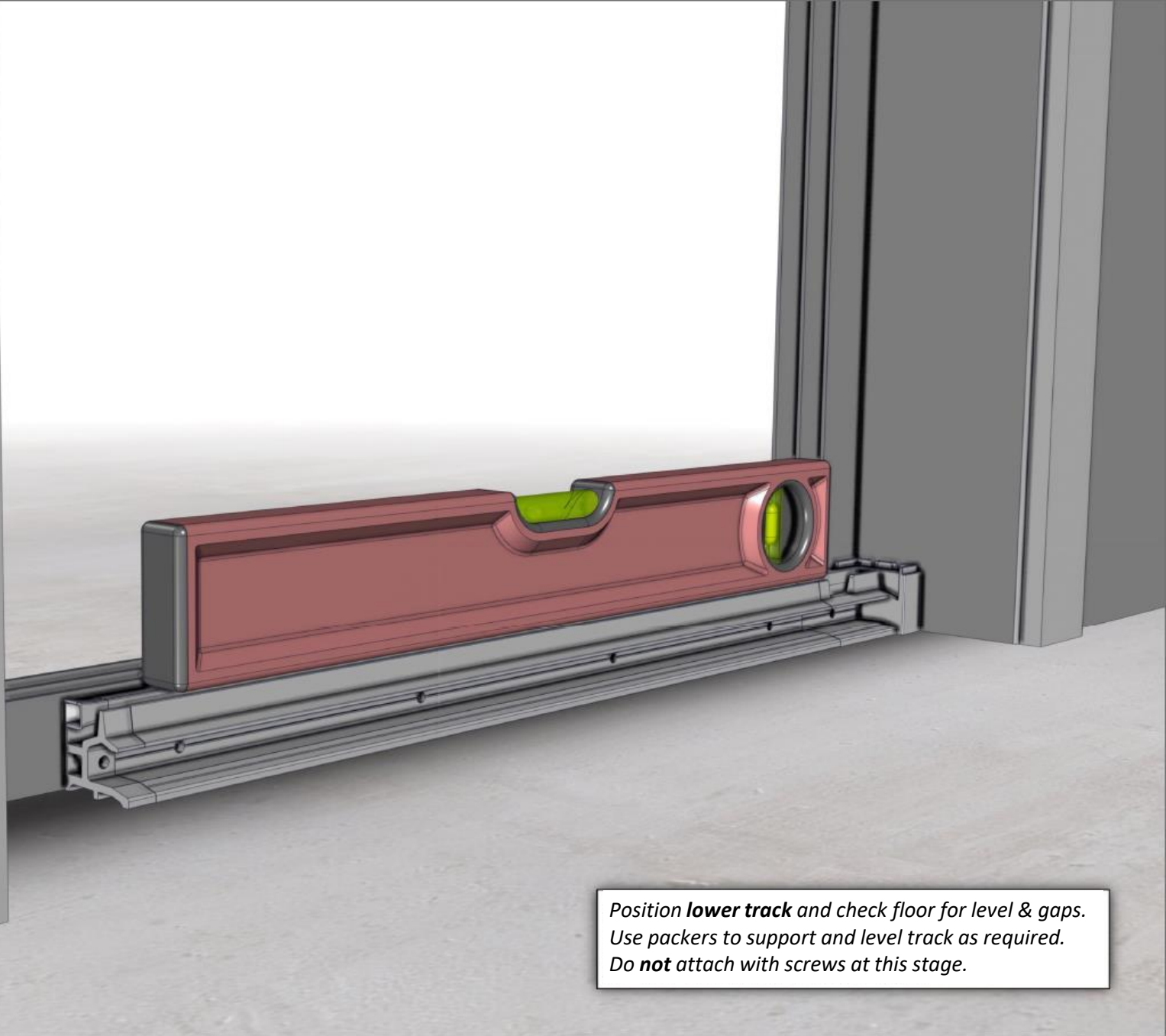
Countersink and deburr  
zipper entry

VV+ Track Latch A



Attach **track guides** and **track latches** onto the **track** using a soft mallet

## STEP-3

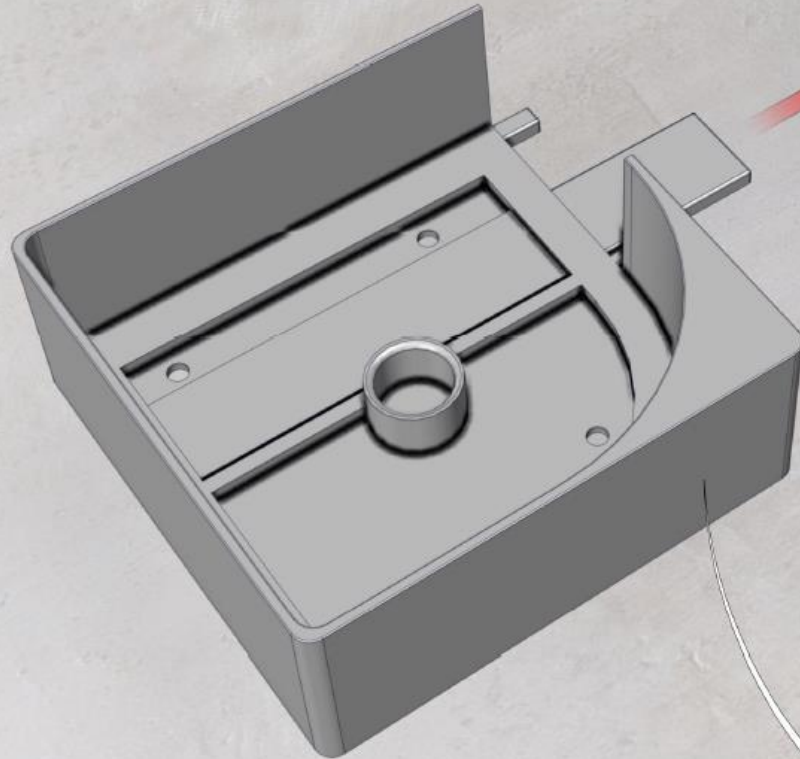


Position **lower track** and check floor for level & gaps.  
Use packers to support and level track as required.  
Do **not** attach with screws at this stage.



**STEP-4**

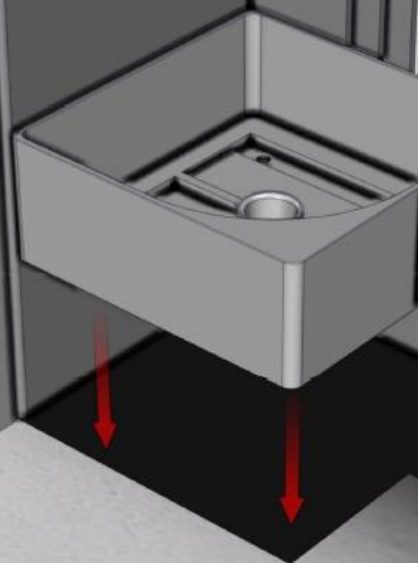
VV Recessed Channel



VV Recessed Cup

*If the lower track is to be recessed, the **recessed cup & channel** are required to assemble as shown.*

## STEP-5



Install the assembled **recessed cup & channel** into pre-made floor cavity. Pack level and secure with silicone and/or screws.

## STEP-6

VV+ Assembled Pull-bar

Housing  
Endcap  
Lug

Zipper

VV Track Guide A

Slide the **lower track** along the **pull-bar** and onto the **housing endcap lug**.

Carefully feed the **zipper** into the **track guide** without damaging.



# STEP-7

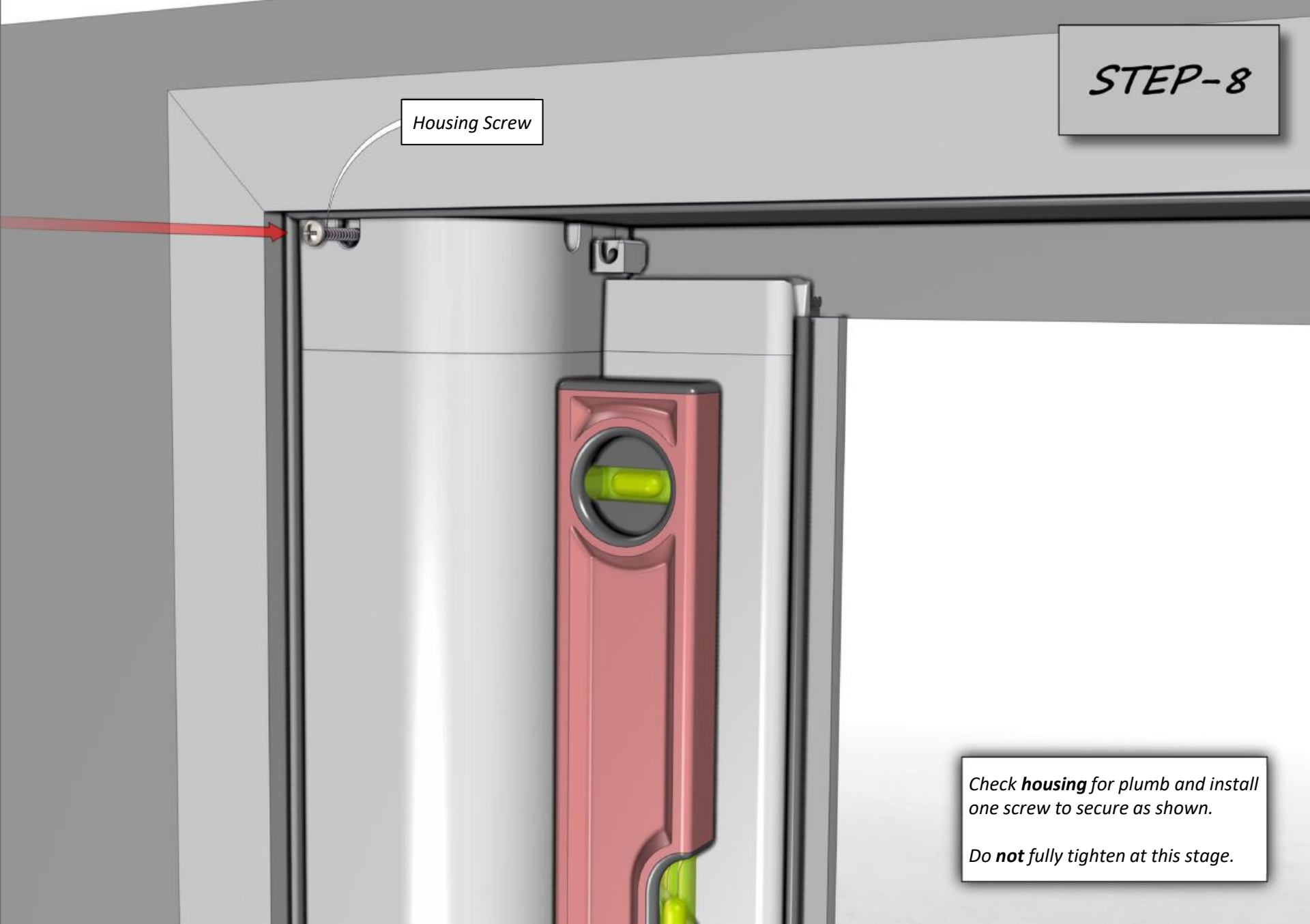
*DO NOT remove handle lock!*

*Position the screen. Lower into **recessed cup & channel** if used.*



# STEP-8

Housing Screw



Check **housing** for plumb and install one screw to secure as shown.

Do **not** fully tighten at this stage.

# STEP-9

*DO NOT remove handle lock!*

Ensure **lower track** is correctly positioned. Secure with provided #6 S/T screws.  
Note: Do **not** screw the housing yet.

**STEP-10**

Housing Endcap Lug

**DO NOT** remove handle lock!

Slide the **upper track** along the **pull-bar** and onto the **housing endcap lug**, carefully feeding the **zipper** into the **track guide** without damaging.

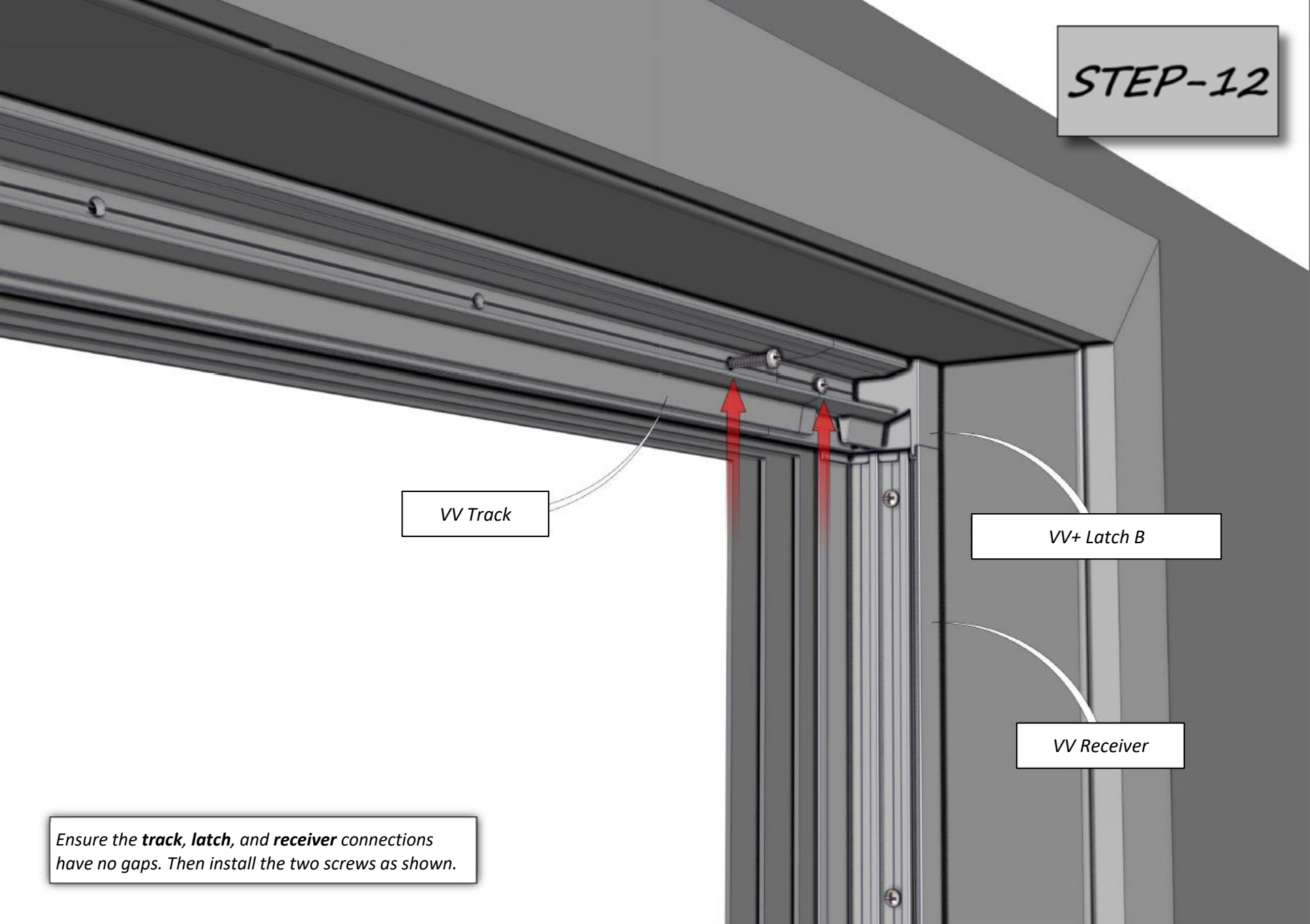
## STEP-11

Alternative screw groove

Fit receiver between **upper & lower latches**. Either lift the **upper track** over the spigots, or flex the **receiver** into position. Check that it sits flush, then screw.



**STEP-12**



VV Track

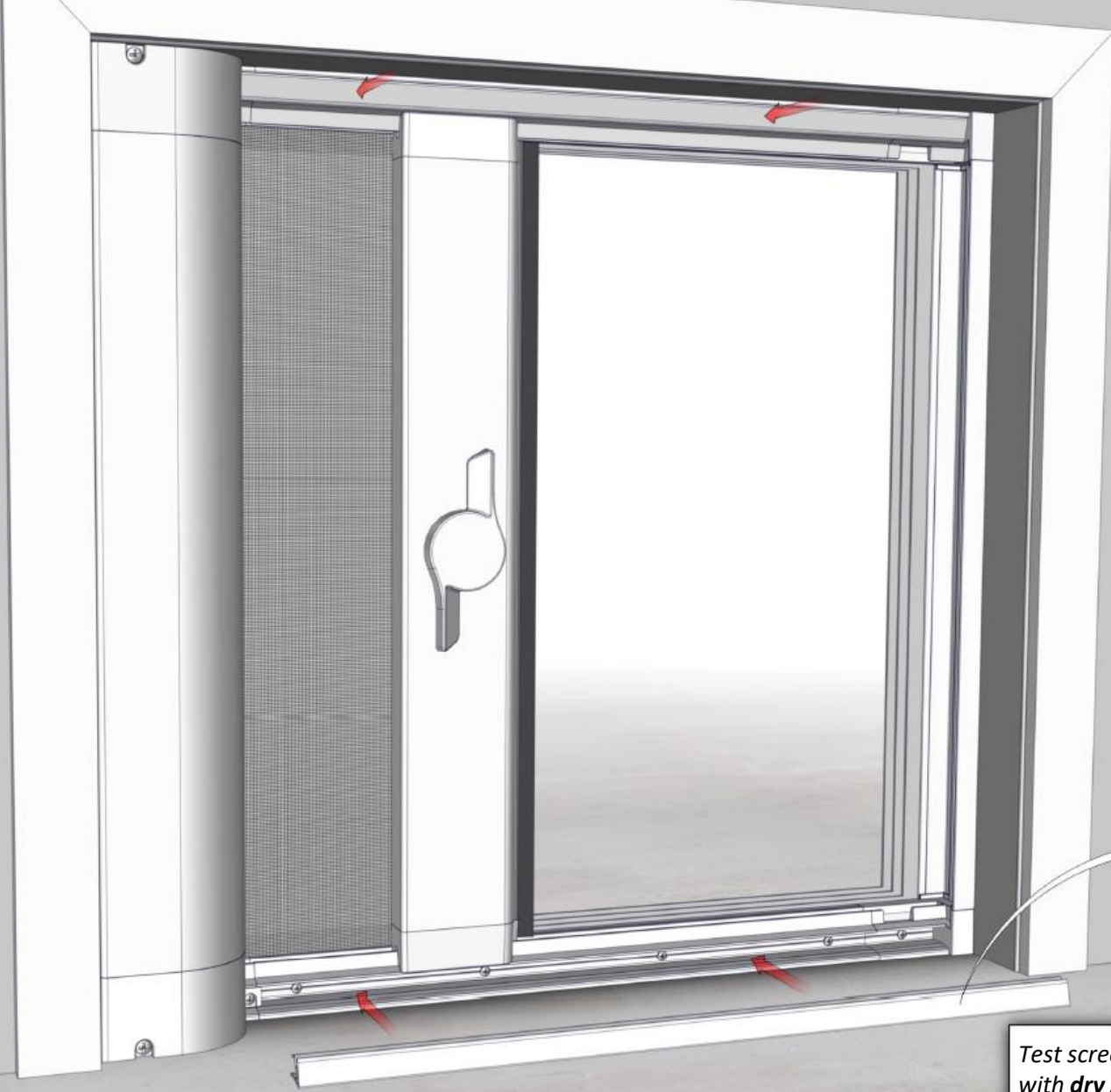
VV+ Latch B

VV Receiver

Ensure the **track**, **latch**, and **receiver** connections have no gaps. Then install the two screws as shown.



# STEP-14



Optional Track Covers

*Test screen operation and lubricate with **dry silicone**. Install **optional track covers**. Installation is complete!*