



Wizard

Industries Inc.

One Cut Method

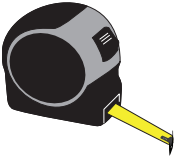


"The One Cut Method"



One Cut Method Steps

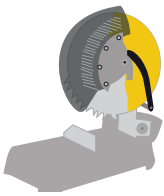
TOOLS AND PARTS



Tape Measure

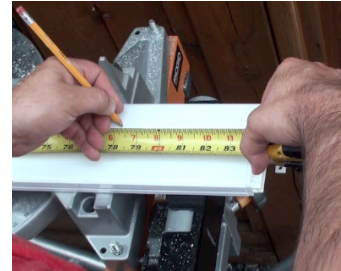


Pencil

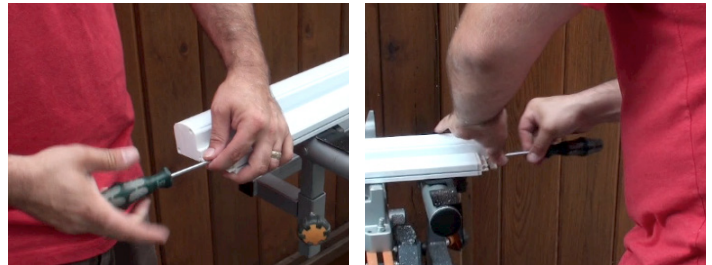


Chop Saw

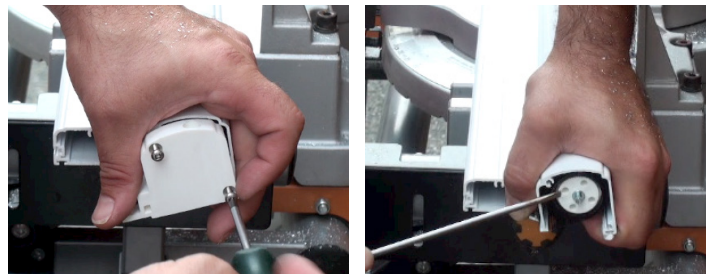
- 1 From the left housing cap measure the desired length of the door. Now deduct 1/2" and mark housing.



- 2 Remove the left and right end caps.



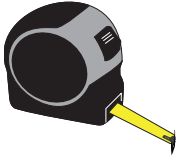
- 3 Remove right sides housing cap, and the end plug.



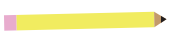


One Cut Method Steps

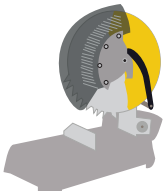
TOOLS AND PARTS



Tape Measure



Pencil



Chop Saw

- 4 To align Pullbar, Mesh and Housing slide the pull bar to be in line with the housing. Carefully adjust the mesh and rolltube to also be flush.



- 5 Use a chop saw and cut along your line.



- 6 Slide the pull bar back down. You will have to snip the excess mesh and spline.

- 7 Put the housing back together in perfect reverse order End plug, Housing Cap, Right Endcap, Left Endcap